

iHFG Standard Components

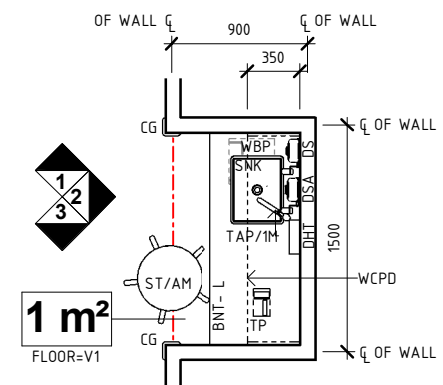
Room Layout Sheet

Room Name **Bay - Pathology, 1m²**

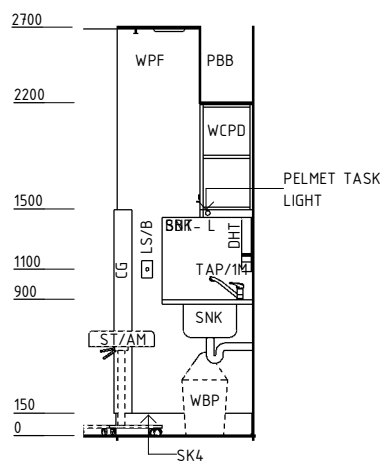
RLS Room Code **BPATH-1-I**
RDS Room Code **BPATH-1-I**

Abbreviations

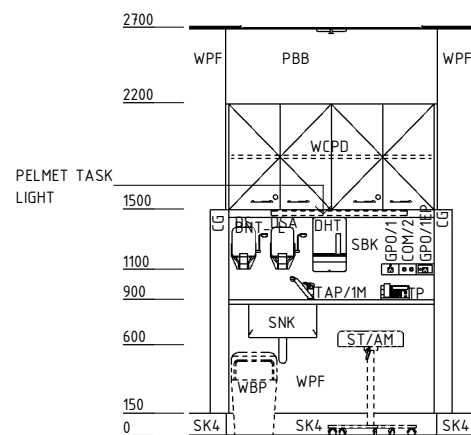
BNT-L	BENCHTOP, LAMINATE
CG	CORNER GUARD
COM/2	COMMUNICATION OUTLET - DOUBLE
DHT	DISPENSER - HAND TOWEL
DS	DISPENSER - SOAP
DSA	DISPENSER - SOAP ANTISEPTIC
GPO/1	GENERAL POWER OUTLET - SINGLE
GPO/1EP	EMERGENCY POWER OUTLET - SINGLE
LS/B	LIGHT SWITCH - BAY
SBK	SPLASHBACK
SNK	SINK, STAINLESS STEEL, 450X350X2500
ST/AM	STOOL: ADJUSTABLE, MOBILE
TAP/1M	TAPWARE - SINGLE MIXER LEVER
TP	TELEPHONE
WBP	WASTE BIN, PAPER
WCPD	WALL CUPBOARD WITH ADJUSTABLE SHELVES, LOCKABLE
PBB	PLASTERBOARD BULKHEAD, PAINT FINISH
SK4	FLOOR VINYL COVERED SKIRTING
WPF	WALL PAINT FINISH
V1	VINYL FLOORING, STANDARD SLIP RESISTANT



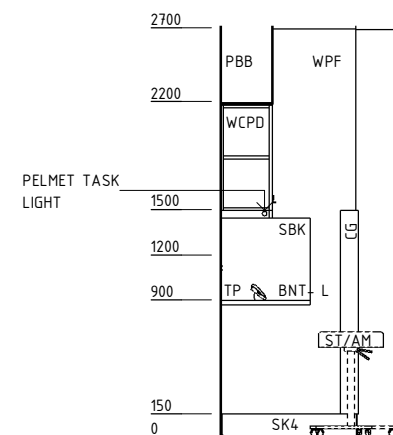
PLAN



ELEVATION 1



ELEVATION 2



ELEVATION 3

REV	DESCRIPTION	DATE	BY	REV	DESCRIPTION	DATE	BY	REV	DESCRIPTION	DATE	BY
1	FIRST ISSUE #	19.06.2015	NB								

iHFG Standard Components

Room Layout Sheet

Room Name **Bay - Pathology, 1m²**

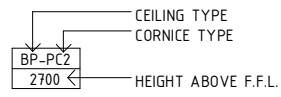
RLS Room Code **BPATH-1-I**
RDS Room Code **BPATH-1-I**

GENERAL NOTES:

THIS DRAWING TO BE READ IN CONJUNCTION WITH R.D.S. (ROOM DATA SHEETS) WHICH TAKES PRECEDENCE.

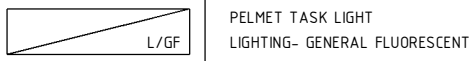
ALL SERVICES INDICATED ARE INDICATIVE AND SUBJECT TO DETAILED PROJECT SPECIFIC ENGINEERING DESIGN.

CEILING LEGEND:



- PB-PC4 | PLASTERBOARD FLUSH SET CEILING, PAINT FINISH WITH POWDERCOAT ALUMINIUM CORNICE, SHADOW LINE
- PBB | PLASTERBOARD BULKHEAD, PAINT FINISH
- | GRID LINE

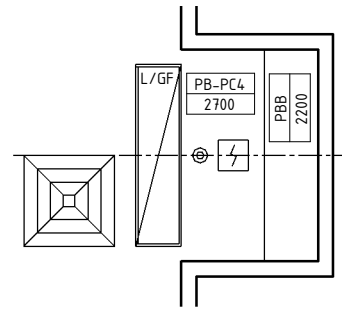
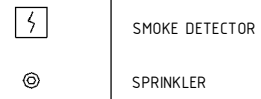
ELECTRICAL LEGEND:



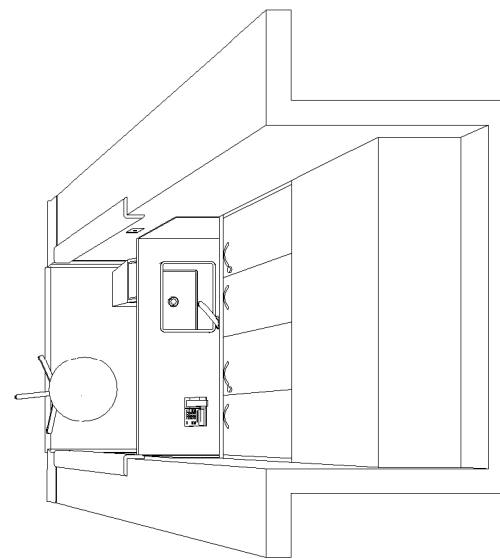
MECHANICAL LEGEND:



FIRE SERVICES LEGEND:



REFLECTED CEILING PLAN



PERSPECTIVE - PLAN VIEW

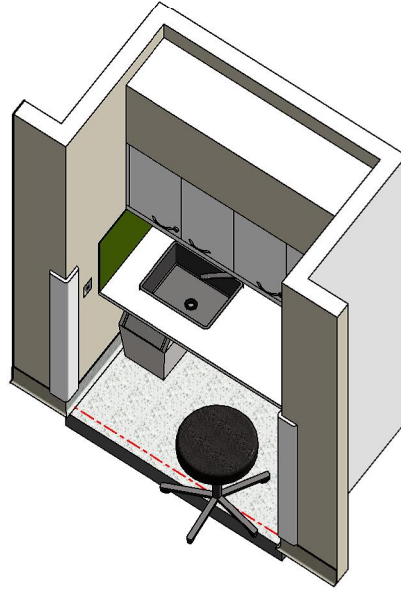
REV	DESCRIPTION	DATE	BY	REV	DESCRIPTION	DATE	BY	REV	DESCRIPTION	DATE	BY
1	FIRST ISSUE #	19.06.2015	NB								

iHFG Standard Components

Room Layout Sheet

Room Name | Bay - Pathology, 1m²

RLS Room Code BPATH-1-I
RDS Room Code BPATH-1-I



ISOMETRIC VIEW 01



PERSPECTIVE 01

REV	DESCRIPTION	DATE	BY	REV	DESCRIPTION	DATE	BY	REV	DESCRIPTION	DATE	BY
1	FIRST ISSUE #	19.06.2015	NB								



The International Health Facility Guidelines recommends the use of HFBS “Health Facility Briefing System” to edit all room data sheet information for your project.

HFBS provides edit access to all iHFG standard rooms, and departments, and more than 100 custom report templates.

HFBS Health Facility Briefing System



Briefing Module

The Health Facility Briefing System (HFBS) has numerous modules available via annual subscription. It suits healthcare Architects, Medical Planners, Equipment Planners Project Managers and Health Authorities.

Use the HFBS Briefing Module to quickly drag in health facility departments or pre-configured room templates from the iHFG standard, edit the room features such as finishes, furniture, fittings, fixtures, medical equipment, engineering services. The system can print or download as PDF more than 100 custom reports including room data sheets, schedules, and more...

To learn more about the HFBS web-based Healthcare Briefing and Design Software and to obtain editable versions of the “Standard Components” including Room Data Sheets (RDS) and Room Layout Sheets (RLS) offered on the iHFG website, signup for HFBS using the link below.

Get Started Now:
hfbs.healthdesign.com.au

- ✓ iHFG Room Data Sheets and Departments are instantly editable in the HFBS software available online.
- ✓ You can access hundreds of report templates to print your iHFG room data in HFBS.
- ✓ HFBS has a onetime free 3 day trial available to all new users.

Get Started Now:
hfbs.healthdesign.com.au



HFBS

Health Facility Briefing System

hfbsinfo.com | techsupport@healthdesign.com.au