

iHFG Standard Components

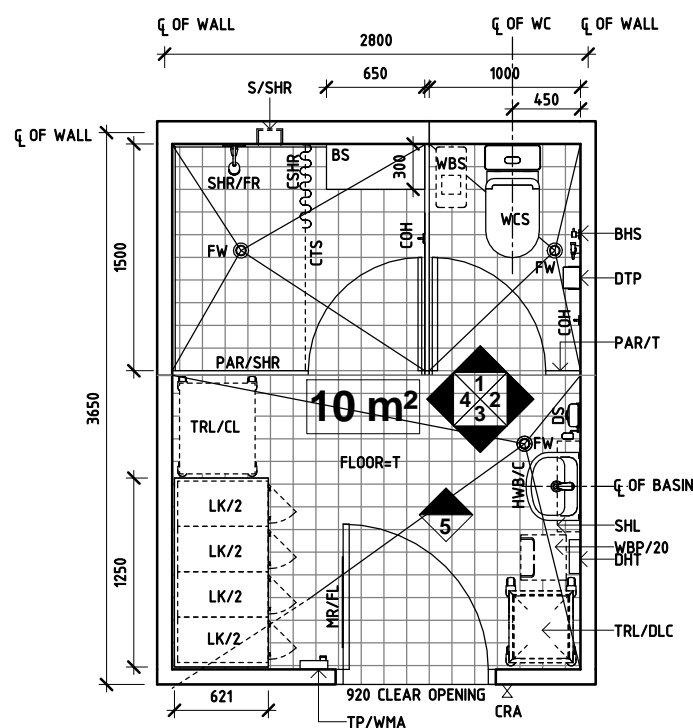
Room Layout Sheet

Room Name | Change Room - Staff (Male/Female), 10 m²

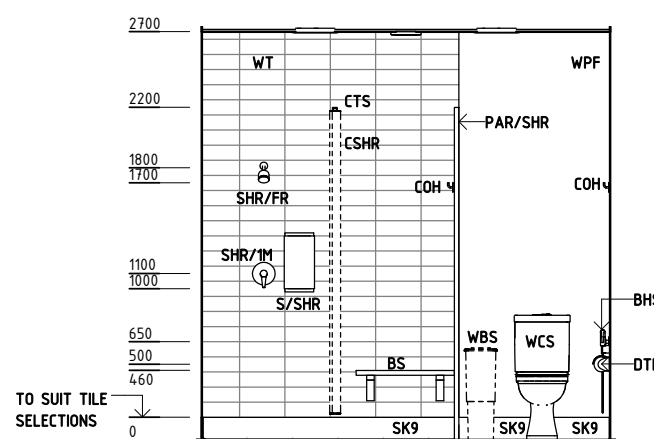
RLS Room Code CHST-10-I
RDS Room Code CHST-10-I

Abbreviations

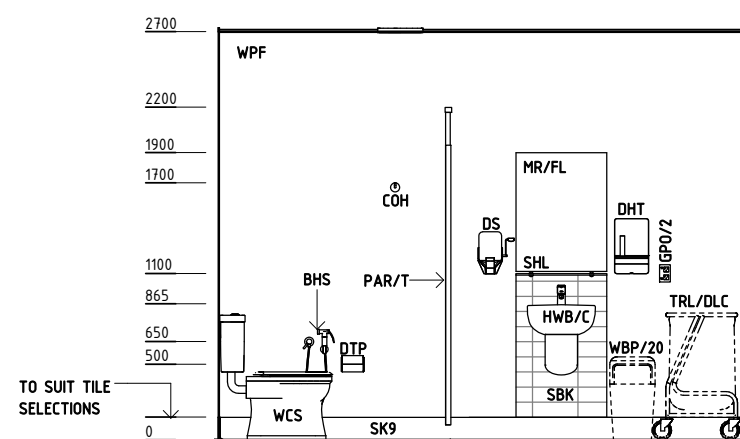
BHS	BIDET HANDSET
BNS	BENCH SEAT
BS	BENCH SEAT, SHOWER
C/BA	CLOCK: BATTERY OPERATED
COH	COAT HOOK
COM/PABX	COMMUNICATION OUTLET - PABX
CRA	CARD ACCESS
CSHR	SHOWER CURTAIN
CTS	CURTAIN TRACK : SHOWER
DFP	DOOR AND DOOR FRAME PROTECTION
DHT	DISPENSER - HAND TOWEL
DS	DISPENSER - SOAP
DTP	DISPENSER - TOILET PAPER
FW	FLOOR WASTE
GPO/2	GENERAL POWER OUTLET - DOUBLE
HWB/C	HANDWASH BASIN 'TYPE C'
LK/2	LOCKER: 2 TIER
LS/R	LIGHT SWITCH - ROOM
MR/FL	FULL LENGTH MIRROR
PAR/SHR	PARTITIONS: SHOWER
PAR/T	PARTITIONS: TOILET
S/SHR	SOAP AND SHAMPOO HOLDER, RECESSED
SBK	SPLASHBACK
SHL	SHELF: VANITY
SHR/1M	SHOWER-SINGLE MIXER TAP
SHR/FR	SHOWER : FIXED ROSE
TAP/1M	TAPWARE - SINGLE MIXER LEVER
TP/WMA	TELEPHONE - WALL MOUNTED, A
TRL/CL	TROLLEY : CLEAN LINEN
TRL/DLC	TROLLEY: DIRTY LINEN CARRIER
WBP/20	WASTE BIN - PAPER - 20 LITRE
WBS	WASTE BIN, SANITARY
WCS	TOILET: STANDARD
SK9	TILE COVERED SKIRTING
WPF	WALL PAINT FINISH
WT	WALL TILE
T	TILE



PLAN



ELEVATION 1



ELEVATION 2

REV	DESCRIPTION	DATE	BY	REV	DESCRIPTION	DATE	BY	REV	DESCRIPTION	DATE	BY
1	FIRST ISSUE #	19.10.2015	ASD								

iHFG Standard Components

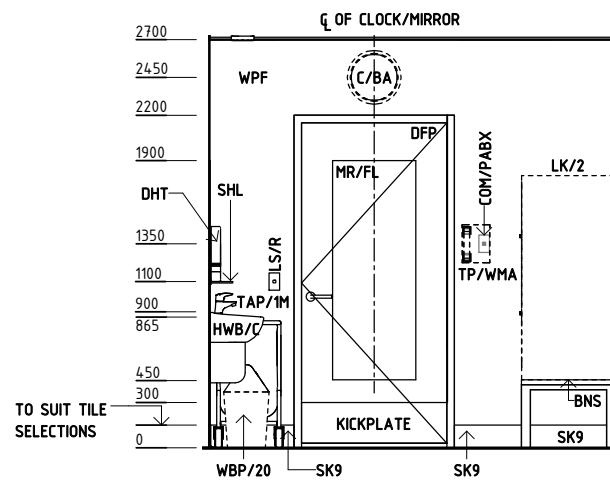
Room Layout Sheet

Room Name | Change Room - Staff (Male/Female), 10 m²

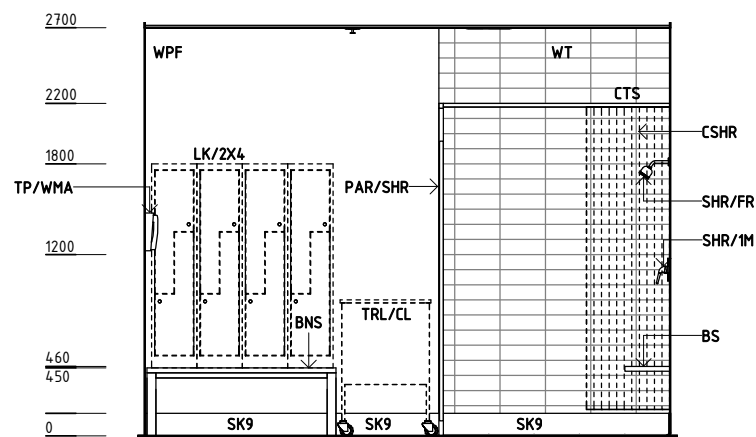
RLS Room Code CHST-10-I
RDS Room Code CHST-10-I

Abbreviations

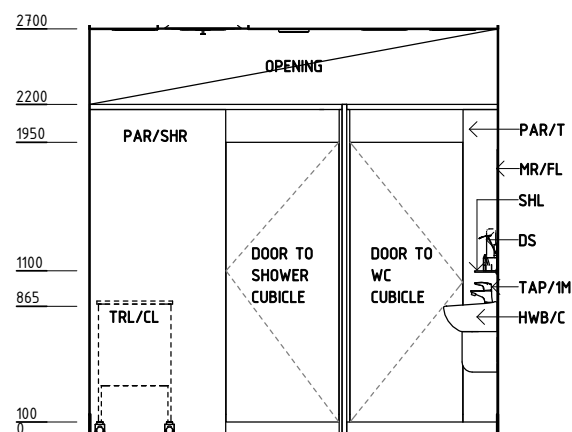
BHS	BIDET HANDSET
BNS	BENCH SEAT
BS	BENCH SEAT, SHOWER
C/BA	CLOCK: BATTERY OPERATED
COH	COAT HOOK
COM/PABX	COMMUNICATION OUTLET - PABX
CRA	CARD ACCESS
CSHR	SHOWER CURTAIN
CTS	CURTAIN TRACK : SHOWER
DFP	DOOR AND DOOR FRAME PROTECTION
DHT	DISPENSER - HAND TOWEL
DS	DISPENSER - SOAP
DTP	DISPENSER - TOILET PAPER
FW	FLOOR WASTE
GPO/2	GENERAL POWER OUTLET - DOUBLE
HWB/C	HANDWASH BASIN 'TYPE C'
LK/2	LOCKER: 2 TIER
LS/R	LIGHT SWITCH - ROOM
MR/FL	FULL LENGTH MIRROR
PAR/SHR	PARTITIONS: SHOWER
PAR/T	PARTITIONS: TOILET
S/SHR	SOAP AND SHAMPOO HOLDER, RECESSED
SBK	SPLASHBACK
SHL	SHELF: VANITY
SHR/IM	SHOWER-SINGLE MIXER TAP
SHR/FR	SHOWER : FIXED ROSE
TAP/IM	TAPWARE - SINGLE MIXER LEVER
TP/WMA	TELEPHONE - WALL MOUNTED, A
TRL/CL	TROLLEY : CLEAN LINEN
TRL/DLC	TROLLEY: DIRTY LINEN CARRIER
WBP/20	WASTE BIN - PAPER - 20 LITRE
WBS	WASTE BIN, SANITARY
WCS	TOILET: STANDARD
SK9	TILE COVERED SKIRTING
WPF	WALL PAINT FINISH
WT	WALL TILE
T	TILE



ELEVATION 3



ELEVATION 4



ELEVATION 5

REV	DESCRIPTION	DATE	BY	REV	DESCRIPTION	DATE	BY	REV	DESCRIPTION	DATE	BY
1	FIRST ISSUE #	19.10.2015	ASD								

iHFG Standard Components

Room Layout Sheet

Room Name **Change Room - Staff (Male/Female), 10 m²**

RLS Room Code **CHST-10-I**
RDS Room Code **CHST-10-I**

GENERAL NOTES:

THIS DRAWING TO BE READ IN CONJUNCTION WITH R.D.S. (ROOM DATA SHEETS) WHICH TAKES PRECEDENCE.

ALL SERVICES INDICATED ARE INDICATIVE AND SUBJECT TO DETAILED PROJECT SPECIFIC ENGINEERING DESIGN.

CEILING LEGEND:

CEILING TYPE
CORNICHE TYPE
PB-PC2
2700
HEIGHT ABOVE F.F.L.

WPT-PC4
WATER RESISTANT, DROP IN TILES WITH POWDERCOAT
ALUMINIUM CORNICHE, SHADOW LINE

TILE CEILING GRID (1200 x 600)

GRID LINE

ELECTRICAL LEGEND:

DL DOWNLIGHT - RECESSED

L/DR LIGHTING - DOWNLIGHT, RECESSED

L/GF LIGHTING- GENERAL FLUORESCENT

MECHANICAL LEGEND:

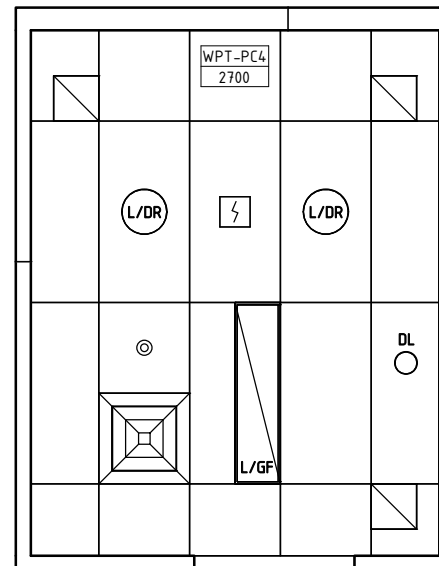
SUPPLY AIR GRILLE

EXHAUST

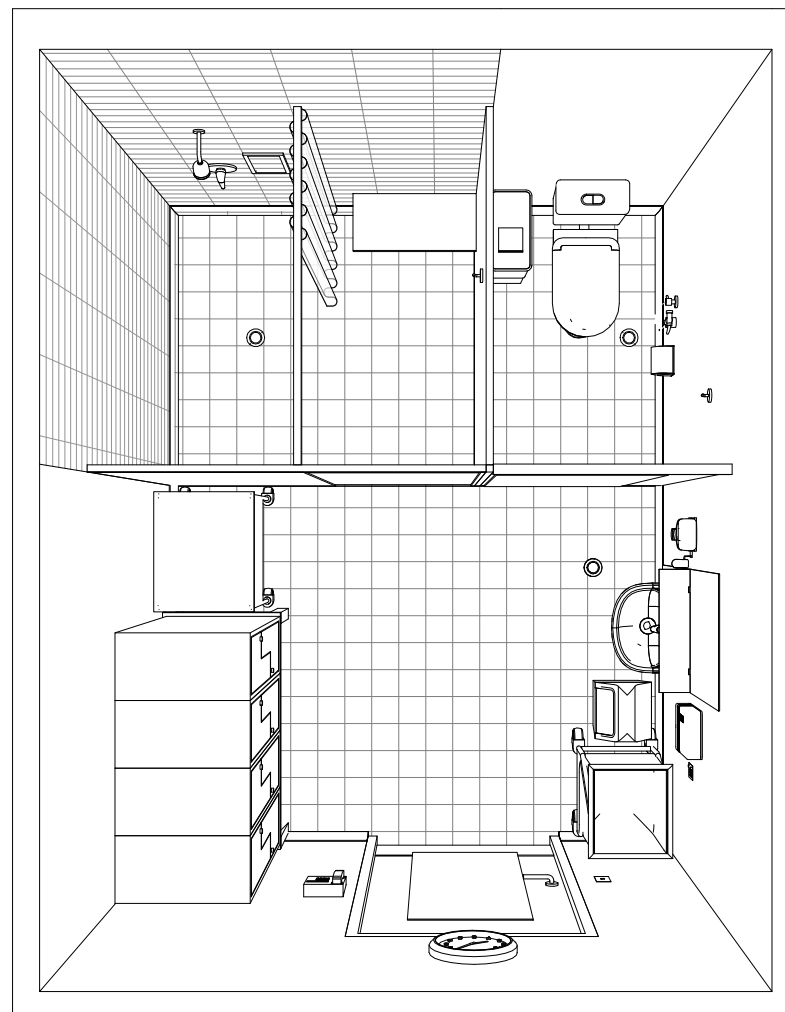
FIRE SERVICES LEGEND:

SMOKE DETECTOR

SPRINKLER



REFLECTED CEILING PLAN



PERSPECTIVE - PLAN VIEW

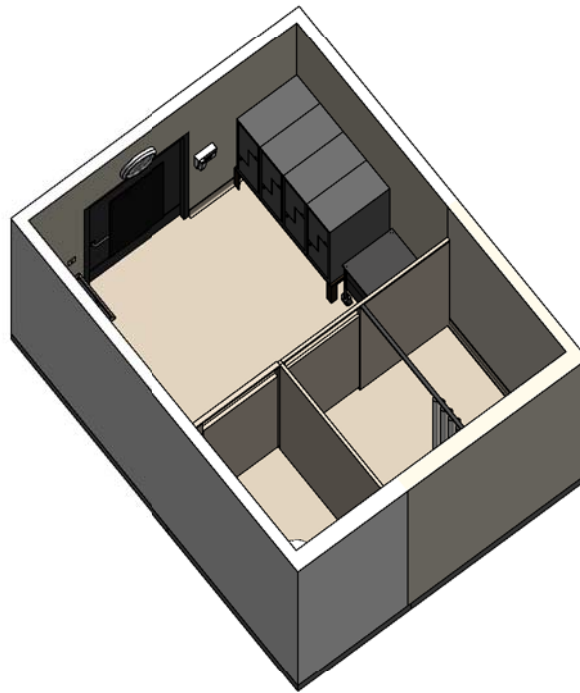
REV	DESCRIPTION	DATE	BY	REV	DESCRIPTION	DATE	BY	REV	DESCRIPTION	DATE	BY
1	FIRST ISSUE #	19.10.2015	ASD								

iHFG Standard Components

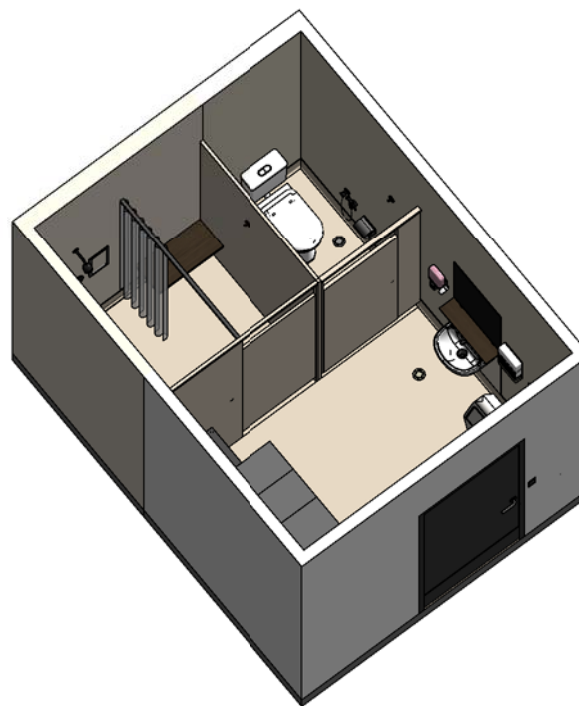
Room Layout Sheet

Room Name | Change Room - Staff (Male/Female), 10 m²

RLS Room Code CHST-10-I
RDS Room Code CHST-10-I



ISOMETRIC VIEW 01



ISOMETRIC VIEW 02

REV	DESCRIPTION	DATE	BY	REV	DESCRIPTION	DATE	BY	REV	DESCRIPTION	DATE	BY
1	FIRST ISSUE #	19.10.2015	ASD								

iHFG Standard Components

Room Layout Sheet

Room Name | Change Room - Staff (Male/Female), 10 m²

RLS Room Code CHST-10-I
RDS Room Code CHST-10-I



PERSPECTIVE 01



PERSPECTIVE 02



PERSPECTIVE 03



PERSPECTIVE 04

REV	DESCRIPTION	DATE	BY	REV	DESCRIPTION	DATE	BY	REV	DESCRIPTION	DATE	BY
1	FIRST ISSUE #	19.10.2015	ASD								



The International Health Facility Guidelines recommends the use of HFBS “Health Facility Briefing System” to edit all room data sheet information for your project.

HFBS provides edit access to all iHFG standard rooms, and departments, and more than 100 custom report templates.

HFBS Health Facility Briefing System



Briefing Module

The Health Facility Briefing System (HFBS) has numerous modules available via annual subscription. It suits healthcare Architects, Medical Planners, Equipment Planners Project Managers and Health Authorities.

Use the HFBS Briefing Module to quickly drag in health facility departments or pre-configured room templates from the iHFG standard, edit the room features such as finishes, furniture, fittings, fixtures, medical equipment, engineering services. The system can print or download as PDF more than 100 custom reports including room data sheets, schedules, and more...

To learn more about the HFBS web-based Healthcare Briefing and Design Software and to obtain editable versions of the “Standard Components” including Room Data Sheets (RDS) and Room Layout Sheets (RLS) offered on the iHFG website, signup for HFBS using the link below.

Get Started Now:
hfbs.healthdesign.com.au

- ✓ iHFG Room Data Sheets and Departments are instantly editable in the HFBS software available online.
- ✓ You can access hundreds of report templates to print your iHFG room data in HFBS.
- ✓ HFBS has a onetime free 3 day trial available to all new users.

Get Started Now:
hfbs.healthdesign.com.au



HFBS

Health Facility Briefing System

hfbsinfo.com | techsupport@healthdesign.com.au