

# iHFG Standard Components

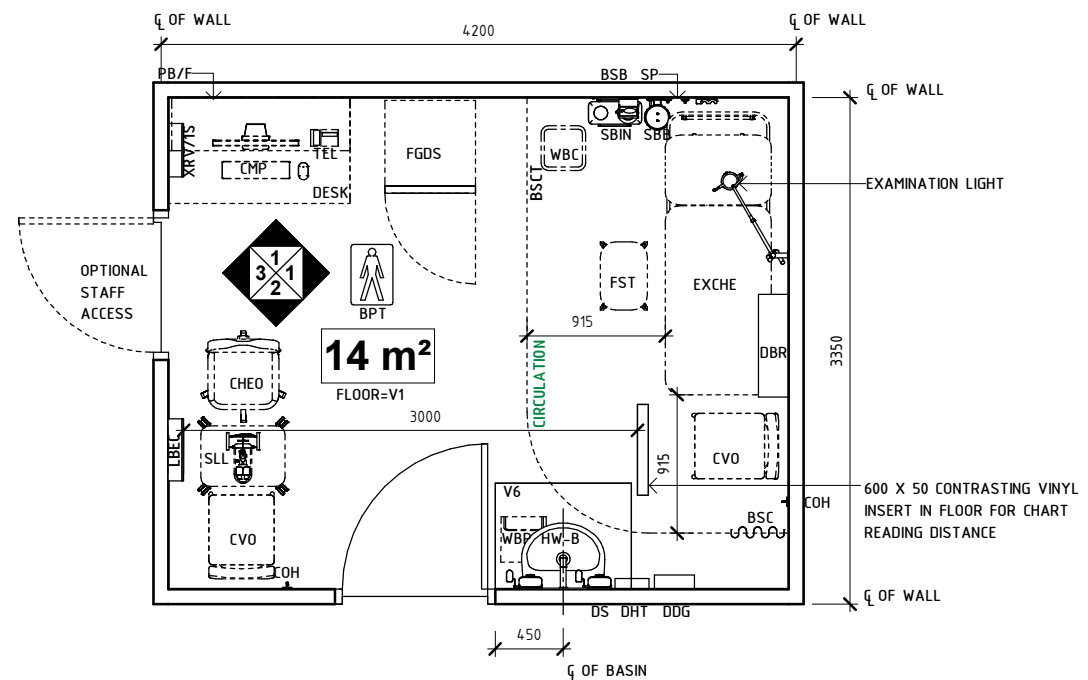
## Room Layout Sheet

Room Name **Consult Room - ENT / Ophthalmology**

RLS Room Code **CONS-ENT-OPT-I**  
RDS Room Code **CONS-ENT-OPT-I**

### Abbreviations

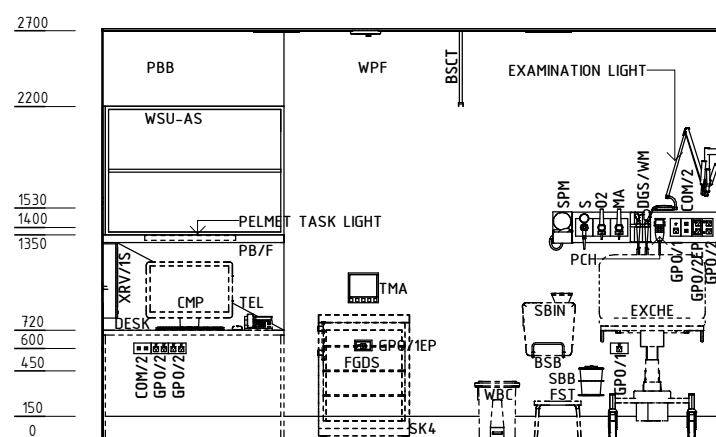
BPT	BODY PROTECTED
BSB	BRACKET: SHARP BIN
BSC	BED SCREEN CURTAIN
BSCT	BED SCREEN CURTAIN TRACK
CHEO	CHAIR ERGONOMIC - OFFICE
COMP	COMPUTER
COH	COAT HOOK
COM/2	COMMUNICATION OUTLET - DOUBLE
CVO	CHAIR: VISITOR, OFFICE
DAL	DURESS ALARM
DBR	DISPENSER: BED ROLL
DDG	DISPENSER - DISPOSABLE GLOVES
DFP	DOOR AND DOOR FRAME PROTECTION
DGS/WM	DIAGNOSTIC SET: WALL MOUNTED
DHT	DISPENSER - HAND TOWEL
DS	DISPENSER - SOAP
DSA	DISPENSER - SOAP ANTISEPTIC
EC	EMERGENCY CALL
EXCHE	EXAMINATION COUCH, ELECTRIC
FGDS	FRIDGE: DRUG, SMALL
FST	FOOT STOOL
GPO/1	GENERAL POWER OUTLET - SINGLE
GPO/1EP	EMERGENCY POWER OUTLET - SINGLE
GPO/2	GENERAL POWER OUTLET - DOUBLE
GPO/2EP	EMERGENCY POWER OUTLET - DOUBLE
HW-B	HAND WASH BASIN, TYPE 'B'
LBEC	LIGHT BOX: EYE CHART
LS	LIGHT SWITCH
MA	MEDICAL AIR
MR	MIRROR
O2	OXYGEN
PB/F	PIN BOARD, FABRIC COVERED
PCH	PATIENT CALL HANDSET
PS	PATIENT TO STAFF CALL
S	SUCTION
SA	STAFF ASSIST CALL
SBB	SUCTION BOTTLE BRACKET
SBIN	SHARPS BINS
SBK	SPLASHBACK
SLL	SLIT LAMP
SP	SERVICES PANEL
SPM	SPYGMOMANOMETER
ST	SENSOR TAP
TEL	TELEPHONE
TMA	TEMPERATURE MONITOR & ALARM
WBC	WASTE BIN: CLINICAL
WBP	WASTE BIN, PAPER
WSU-AS	WALL SHELVING UNIT WITH ADJUSTABLE SHELVES
XR/1S	X-RAY VIEWER: 1 SCREEN
SK4	FLOOR VINYL COVERED SKIRTING
WPF	WALL PAINT FINISH
V1	VINYL FLOORING, STANDARD SLIP RESISTANT
V6	VINYL FLOORING, NON-SLIP



**PLAN**

### SERVICES PANEL:

- 1 x COM/2
- 1 x GPO/1
- 1 x GPO/2
- 1 x GPO/2EP
- 1 x MA
- 1 x O2
- 1 x PCH
- 1 x S



**ELEVATION 1**

REV	DESCRIPTION	DATE	BY	REV	DESCRIPTION	DATE	BY	REV	DESCRIPTION	DATE	BY
1	FIRST ISSUE #	24.10.2014	NB								

# iHFG Standard Components

## Room Layout Sheet

Room Name **Consult Room - ENT / Ophthalmology**

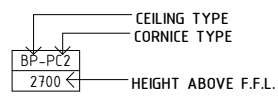
RLS Room Code **CONS-ENT-OPT**  
RDS Room Code **CONS-ENT-OPT**

### GENERAL NOTES:

THIS DRAWING TO BE READ IN CONJUNCTION WITH R.D.S. (ROOM DATA SHEETS) WHICH TAKES PRECEDENCE.

ALL SERVICES INDICATED ARE INDICATIVE AND SUBJECTED TO DETAILED PROJECT SPECIFIC ENGINEERING DESIGN.

### CEILING LEGEND:



- ACT-PC4 ACOUSTIC CEILING TILES WITH POWDERCOAT ALUMINIUM CORNICE, SHADOW LINE
- PBB PLASTERBOARD BULKHEAD, PAINT FINISH
- GRID LINE

### ELECTRICAL LEGEND:

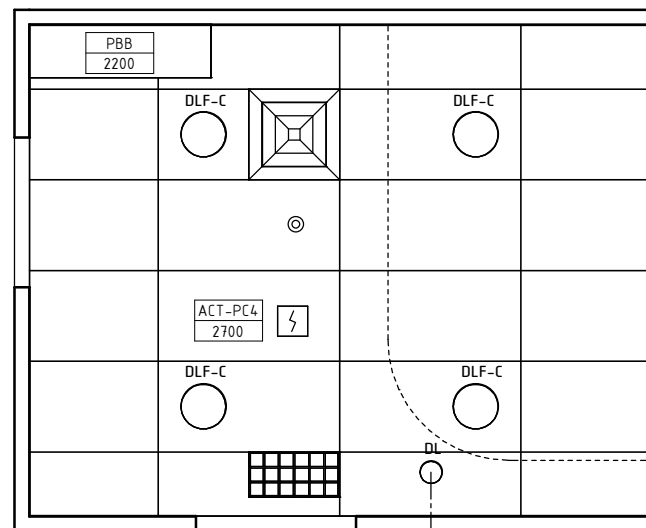
- DL DOWNLIGHT - RECESSED
- DLF-C FLUORESCENT DIFFUSED DOWNLIGHT - RECESSED, COLOUR CORRECTED

### MECHANICAL LEGEND:

- SUPPLY AIR GRILLE
- RETURN AIR OR TRANSFER GRILLE

### FIRE SERVICES LEGEND:

- SMOKE DETECTOR
- SPRINKLER



## REFLECTED CEILING PLAN

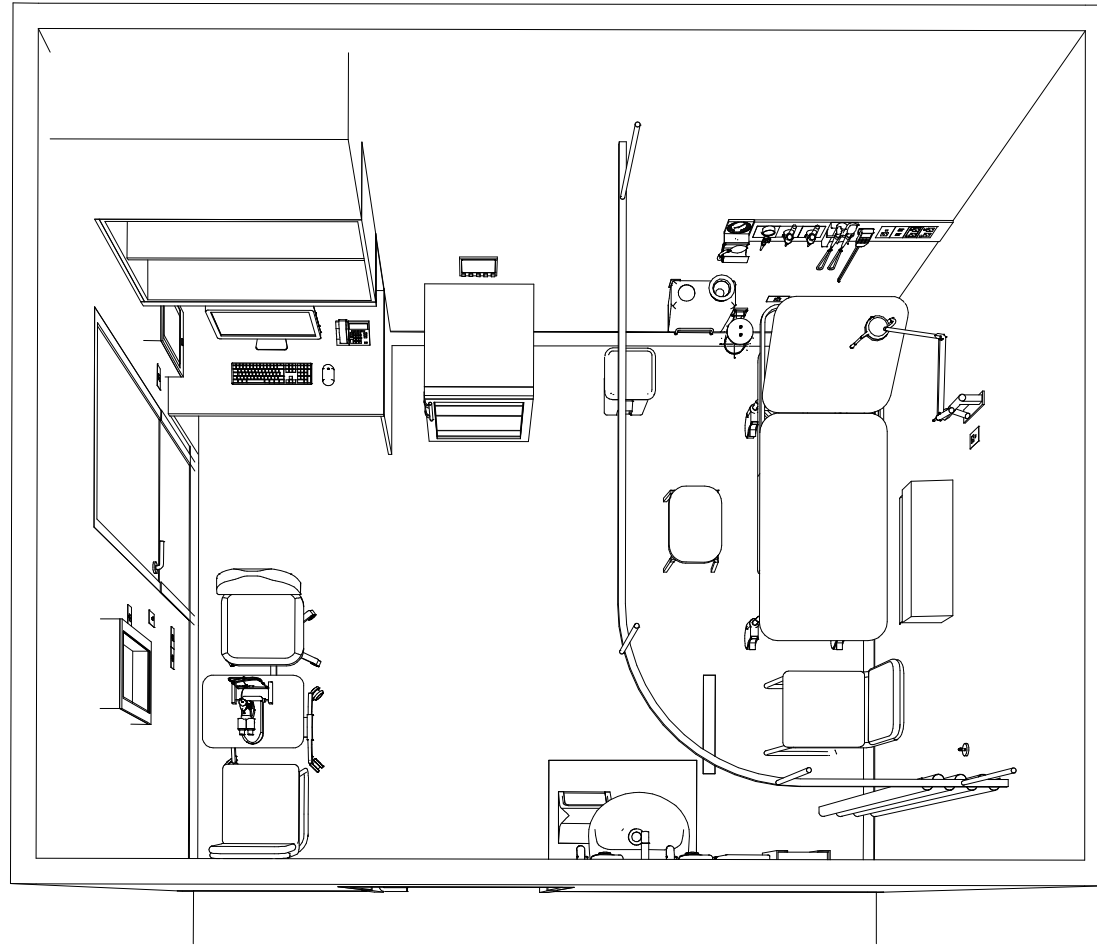
REV	DESCRIPTION	DATE	BY	REV	DESCRIPTION	DATE	BY	REV	DESCRIPTION	DATE	BY
1	FIRST ISSUE #	24.10.2014	NB								

# iHFG Standard Components

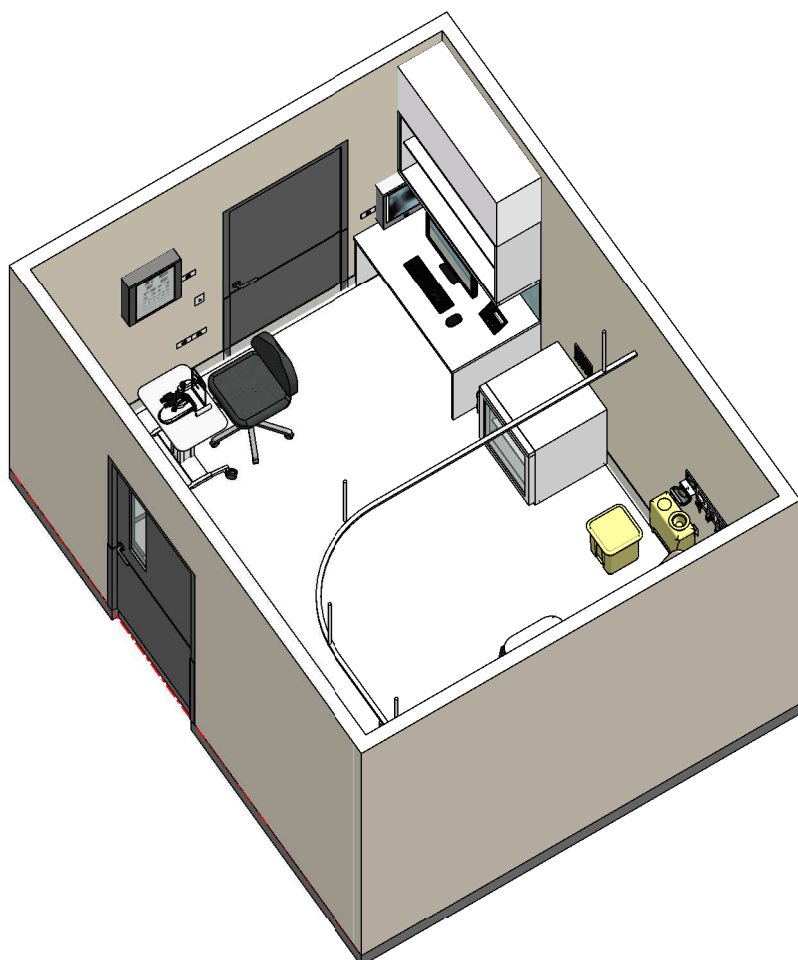
Room Layout Sheet

Room Name | Consult Room - ENT / Ophthalmology

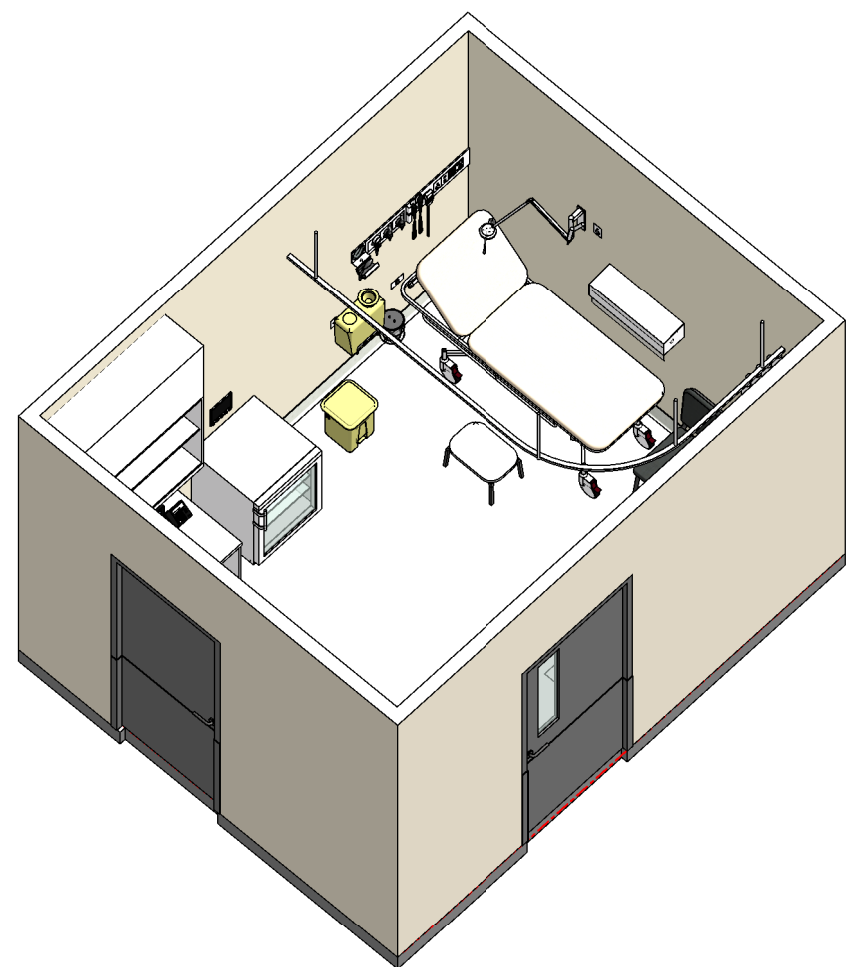
RLS Room Code CONS-ENT-OPT-I  
RDS Room Code CONS-ENT-OPT



**PERSPECTIVE - PLAN VIEW**



**ISOMETRIC VIEW 01**



**ISOMETRIC VIEW 02**

REV	DESCRIPTION	DATE	BY	REV	DESCRIPTION	DATE	BY	REV	DESCRIPTION	DATE	BY
1	FIRST ISSUE #	24.10.2014	NB								

# iHFG Standard Components

## Room Layout Sheet

Room Name | Consult Room - ENT / Ophthalmology

RLS Room Code CONS-ENT-OPT-I  
RDS Room Code CONS-ENT-OPT-I



**PERSPECTIVE 01**



**PERSPECTIVE 02**

REV	DESCRIPTION	DATE	BY	REV	DESCRIPTION	DATE	BY	REV	DESCRIPTION	DATE	BY
1	FIRST ISSUE #	24.10.2014	NB								



The International Health Facility Guidelines recommends the use of HFBS “Health Facility Briefing System” to edit all room data sheet information for your project.

HFBS provides edit access to all iHFG standard rooms, and departments, and more than 100 custom report templates.

## HFBS Health Facility Briefing System



### Briefing Module

The Health Facility Briefing System (HFBS) has numerous modules available via annual subscription. It suits healthcare Architects, Medical Planners, Equipment Planners Project Managers and Health Authorities.

Use the HFBS Briefing Module to quickly drag in health facility departments or pre-configured room templates from the iHFG standard, edit the room features such as finishes, furniture, fittings, fixtures, medical equipment, engineering services. The system can print or download as PDF more than 100 custom reports including room data sheets, schedules, and more...

To learn more about the HFBS web-based Healthcare Briefing and Design Software and to obtain editable versions of the “Standard Components” including Room Data Sheets (RDS) and Room Layout Sheets (RLS) offered on the iHFG website, signup for HFBS using the link below.

**Get Started Now:**  
[hfbs.healthdesign.com.au](http://hfbs.healthdesign.com.au)

- ✓ iHFG Room Data Sheets and Departments are instantly editable in the HFBS software available online.
- ✓ You can access hundreds of report templates to print your iHFG room data in HFBS.
- ✓ HFBS has a onetime free 3 day trial available to all new users.

**Get Started Now:**  
[hfbs.healthdesign.com.au](http://hfbs.healthdesign.com.au)



## HFBS

Health Facility Briefing System

[hfbsinfo.com](http://hfbsinfo.com) | [techsupport@healthdesign.com.au](mailto:techsupport@healthdesign.com.au)