

iHFG Standard Components

Room Layout Sheet

Room Name **Operating Room - Large**

RLS Room Code **ORLA-I**

RDS Room Code **ORLA-I**

- COM/1 COMMUNICATION OUTLET - SINGLE
- COM/2 COMMUNICATION OUTLET - DOUBLE
- DDG DISPENSER - DISPOSABLE GLOVE
- DP DOOR AND DOOR FRAME PROTECTION
- EC EMERGENCY CALL
- GPO/1 GENERAL POWER OUTLET - SINGLE
- GPO/1EP EMERGENCY POWER OUTLET - SINGLE
- GPO/2 GENERAL POWER OUTLET - DOUBLE
- MA MEDICAL AIR
- MATV MASTER ANTENNA TELEVISION
- MGP MEDICAL GAS ALARM PANEL
- N20 NITROUS OXIDE
- NA NURSE ASSIST CALL
- O2 OXYGEN
- OPS OBSERVATION PANEL WITH SLIDING PANEL
- PC2 PLASTERBOARD CORNICE, FLUSH COVERED
- RCD RESIDUAL CURRENT DEVICE
- S SUCTION
- SC SCAVENGE
- SK4 FLOOR VINYL COVED SKIRTING
- SR SCRUB RESISTANT
- V1 VINYL FLOORING, STANDARD SLIP RESISTANT
- WB WHITE BOARD
- WV WALL VINYL
- XRV/4 X-RAY VIEWER, 4 SCREEN

- PENDANT 1**
- 1 X AV
 - 1 X COM/2
 - 1 X MA
 - 1 X N20
 - 2 X O2
 - 1 X SC
 - 2 X S
 - TOOL AIR/UNREGULATED
 - 4 X GPO/1EP
 - 4 X GPO/1

- PENDANT 2**
- 2 X AV
 - 1 X COM/2
 - 1 X MA
 - 1 X N20
 - 2 X O2
 - 1 X SC
 - 2 X S
 - TOOL AIR/UNREGULATED
 - 4 X GPO/1EP
 - 4 X GPO/1

- SERVICES PANEL 1**
- MGP
 - TOOL AIR/CONTROL
 - TOURNIQUET AIR
 - 1 X GPO/1EP
 - 1 X GPO/1
 - 1 X GPO/1 20AMP
 - LIGHT SWITCH PANEL
 - ISOLATED POWER SUPPLY
 - LINE ISOLATION MONITOR
 - OVERLOAD MONITOR

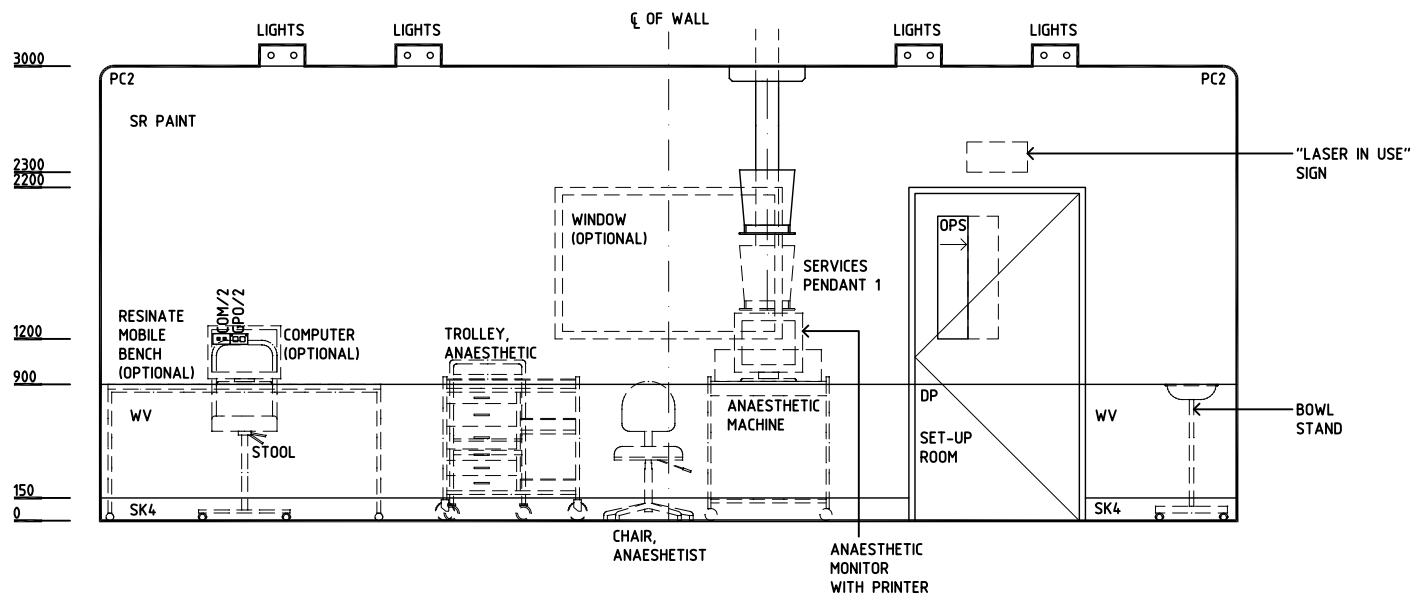
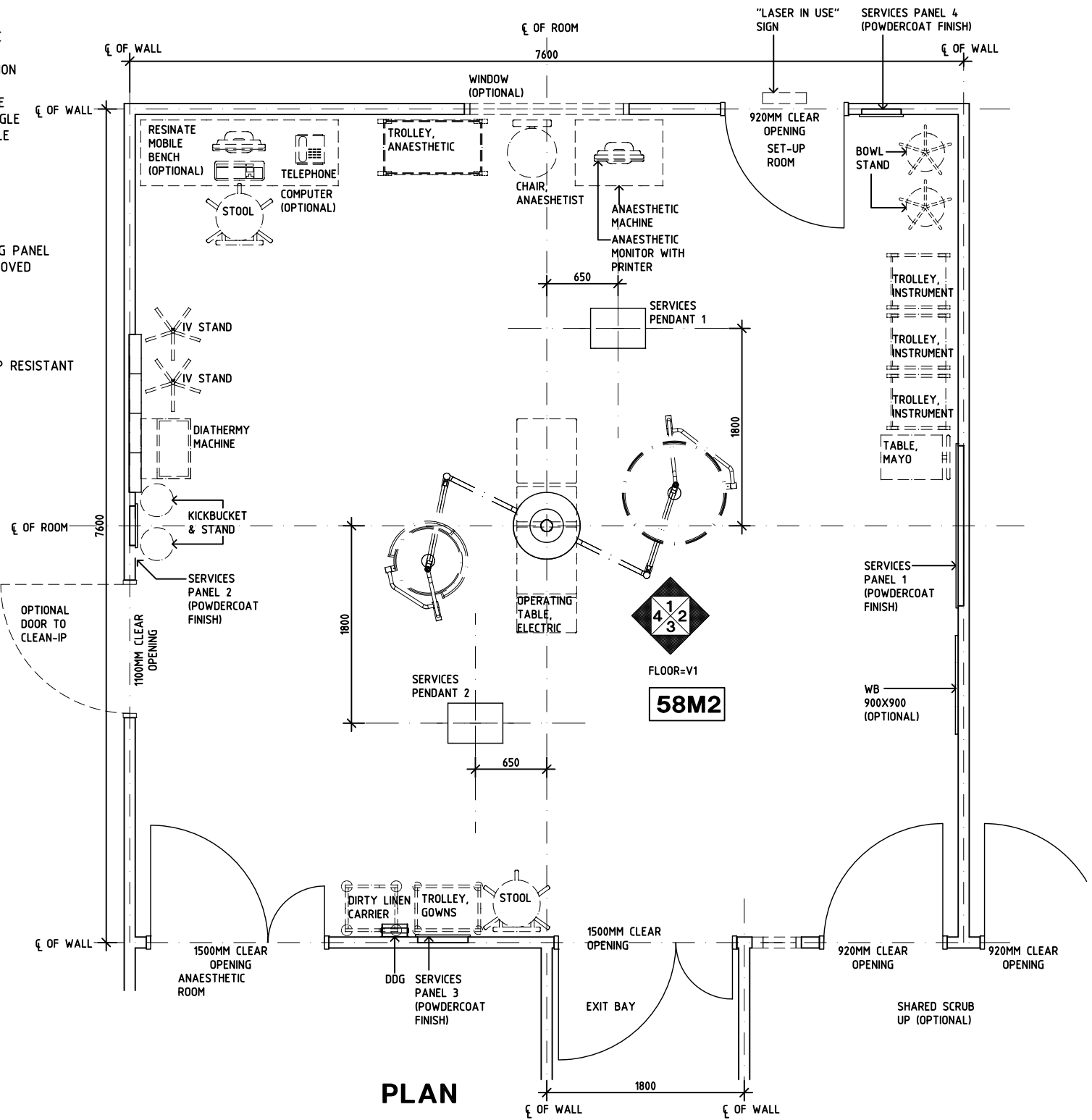
- SERVICES PANEL 2**
- TOOL AIR/CONTROL
 - 1 X GPO/1EP
 - 1 X GPO/1

- SERVICES PANEL 3**
- ORDERLY PORTER (OPTIONAL)
 - 1 X EC
 - 1 X NA
 - 1 X GPO/1EP
 - 1 X GPO/1

- SERVICES PANEL 4**
- 1 X GPO/1EP
 - 1 X GPO/1

NOTE:

- TOOL AIR UNREGULATED TO EACH BOOM FOR BOOM BRAKE
- NUMBER OF SERVICES PER PANEL AND PER PENDANT TBC AS REQUIRED



ELEVATION 1

| REV | DESCRIPTION | DATE | BY | REV | DESCRIPTION | DATE | BY | REV | DESCRIPTION | DATE | BY |
|-----|------------------|----------|----|-----|-------------|---------|----|-----|-------------|------|----|
| 1 | FIRST ISSUE | 24.10.10 | CC | 4 | RCP REVISED | 3.11.15 | PJ | | | | |
| 2 | GENERAL REVISION | 30.08.11 | SD | | | | | | | | |
| 3 | GENERAL REVISION | 31.10.12 | CT | | | | | | | | |

Room Name **Operating Room - Large**

RLS Room Code **ORLA-I**

RDS Room Code **ORLA-I**

- COM/1 COMMUNICATION OUTLET - SINGLE
- COM/2 COMMUNICATION OUTLET - DOUBLE
- DDG DISPENSER - DISPOSABLE GLOVE
- DP DOOR AND DOOR FRAME PROTECTION
- EC EMERGENCY CALL
- GPO/1 GENERAL POWER OUTLET - SINGLE
- GPO/1EP EMERGENCY POWER OUTLET - SINGLE
- GPO/2 GENERAL POWER OUTLET - DOUBLE
- MA MEDICAL AIR
- MATV MASTER ANTENNA TELEVISION
- MGP MEDICAL GAS ALARM PANEL
- N2O NITROUS OXIDE
- NA NURSE ASSIST CALL
- O2 OXYGEN
- OPS OBSERVATION PANEL WITH SLIDING PANEL
- PC2 PLASTERBOARD CORNICE, FLUSH COVERED
- RCD RESIDUAL CURRENT DEVICE
- S SUCTION
- SC SCAVENGE
- SK4 FLOOR VINYL COVERED SKIRTING
- SR SCRUB RESISTANT
- V1 VINYL FLOORING, STANDARD SLIP RESISTANT
- WB WHITE BOARD
- WV WALL VINYL
- XRV/4 X-RAY VIEWER, 4 SCREEN

- PENDANT 1**
- 1 X AV
 - 1 X COM/2
 - 1 X MA
 - 1 X N2O
 - 2 X O2
 - 1 X SC
 - 2 X S
 - TOOL AIR/UNREGULATED
 - 4 X GPO/1EP
 - 4 X GPO/1

- PENDANT 2**
- 2 X AV
 - 1 X COM/2
 - 1 X MA
 - 1 X N2O
 - 2 X O2
 - 1 X SC
 - 2 X S
 - TOOL AIR/UNREGULATED
 - 4 X GPO/1EP
 - 4 X GPO/1

- SERVICES PANEL 1**
- MGP
 - TOOL AIR/CONTROL
 - TOURNIQUET AIR
 - 1 X GPO/1EP
 - 1 X GPO/1
 - 1 X GPO/1 20AMP
 - LIGHT SWITCH PANEL
 - ISOLATED POWER SUPPLY
 - LINE ISOLATION MONITOR
 - OVERLOAD MONITOR

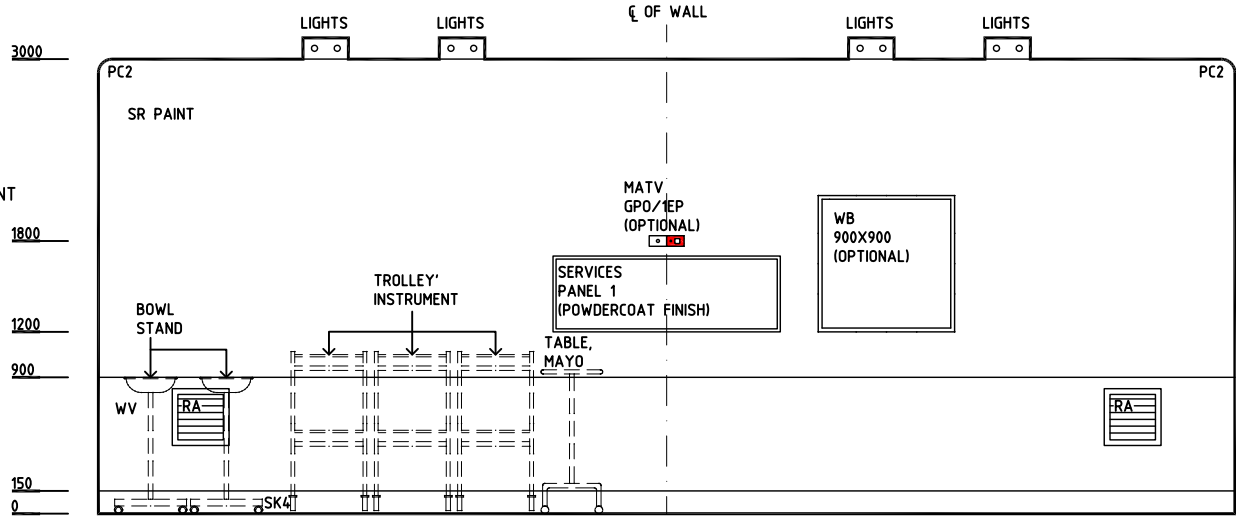
- SERVICES PANEL 2**
- TOOL AIR/CONTROL
 - 1 X GPO/1EP
 - 1 X GPO/1

- SERVICES PANEL 3**
- ORDERLY PORTER (OPTIONAL)
 - 1 X EC
 - 1 X NA
 - 1 X GPO/1EP
 - 1 X GPO/1

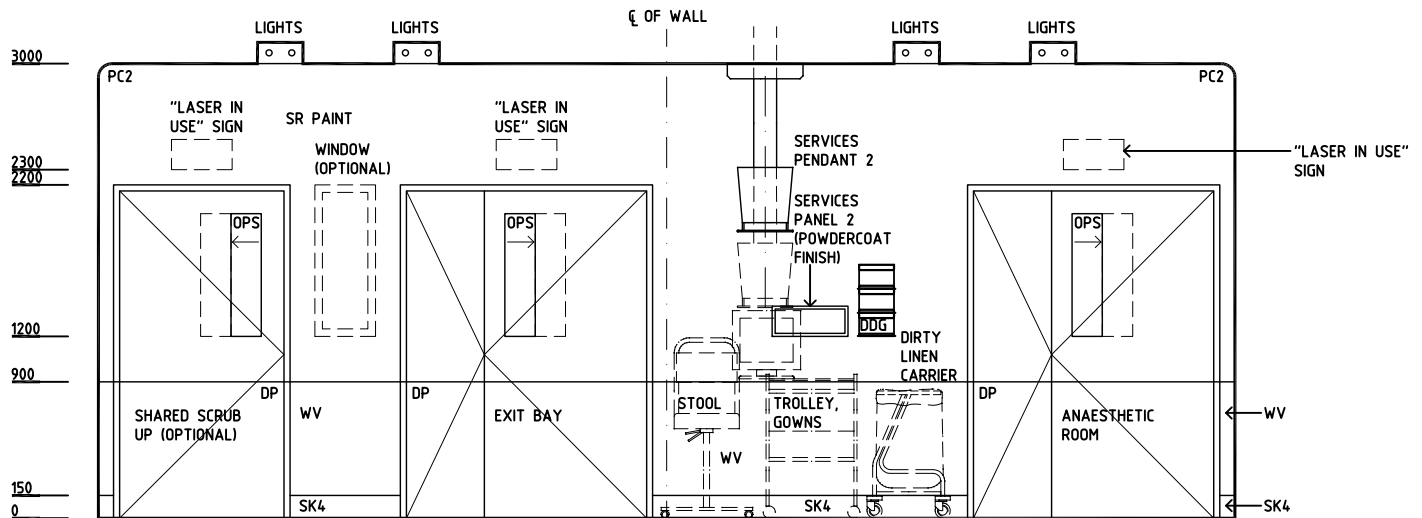
- SERVICES PANEL 4**
- 1 X GPO/1EP
 - 1 X GPO/1

NOTE:

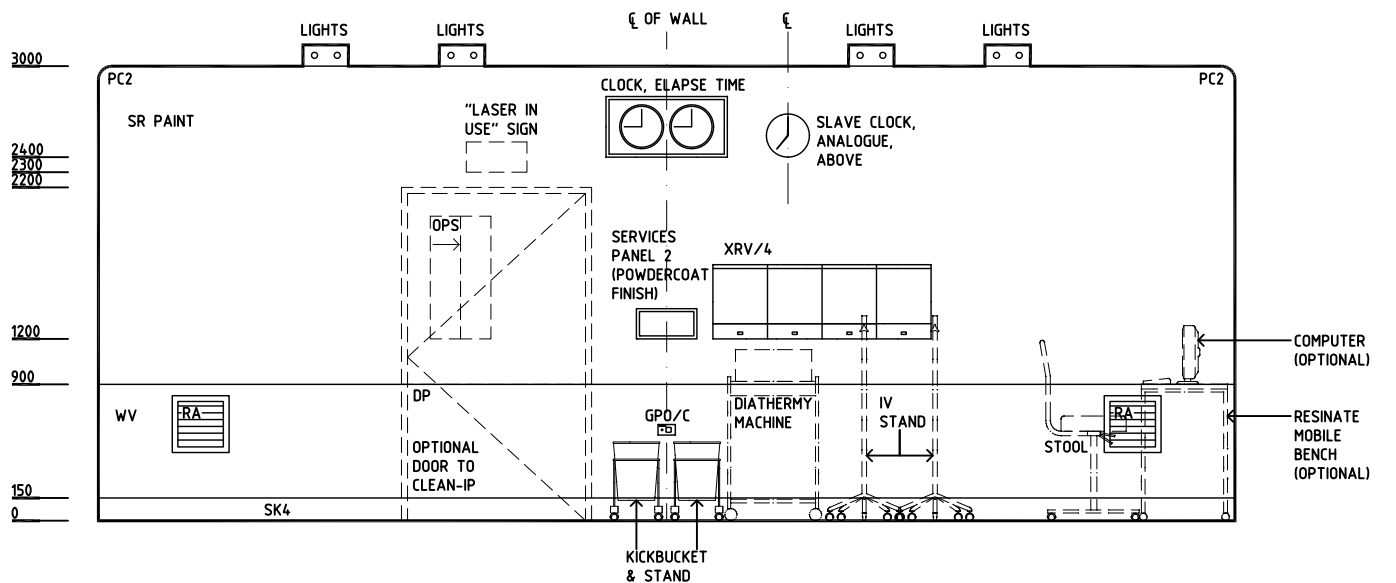
- TOOL AIR UNREGULATED TO EACH BOOM FOR BOOM BRAKE
- NUMBER OF SERVICES PER PANEL AND PER PENDANT TBC AS REQUIRED



ELEVATION 2



ELEVATION 3



ELEVATION 4

| REV | DESCRIPTION | DATE | BY | REV | DESCRIPTION | DATE | BY | REV | DESCRIPTION | DATE | BY |
|-----|------------------|----------|----|-----|-------------|---------|----|-----|-------------|------|----|
| 1 | FIRST ISSUE | 24.10.10 | CC | 4 | RCP REVISED | 3.11.15 | PJ | | | | |
| 2 | GENERAL REVISION | 30.08.11 | SD | | | | | | | | |
| 3 | GENERAL REVISION | 31.10.12 | CT | | | | | | | | |

Room Name **Operating Room - Large**

RLS Room Code **ORLA-I**

RDS Room Code **ORLA-I**

GENERAL NOTES:

THIS DRAWING TO BE READ IN CONJUNCTION WITH R.D.S. (ROOM DATA SHEETS) WHICH TAKES PRECEDENCE.

ALL SERVICES INDICATED ARE INDICATIVE AND SUBJECT TO DETAILED PROJECT SPECIFIC ENGINEERING DESIGN.

CEILING LEGEND:

- PB PLASTERBOARD FLUSH SET CEILING, PAINT
- PC2 90mm. PLASTERBOARD CORNICE, FLUSH COVERED
- GRID LINE
- | |
|------|
| PB |
| 3000 |

 ← CEILING TYPE
 ← HEIGHT ABOVE F.F.L.

ELECTRICAL LEGEND:

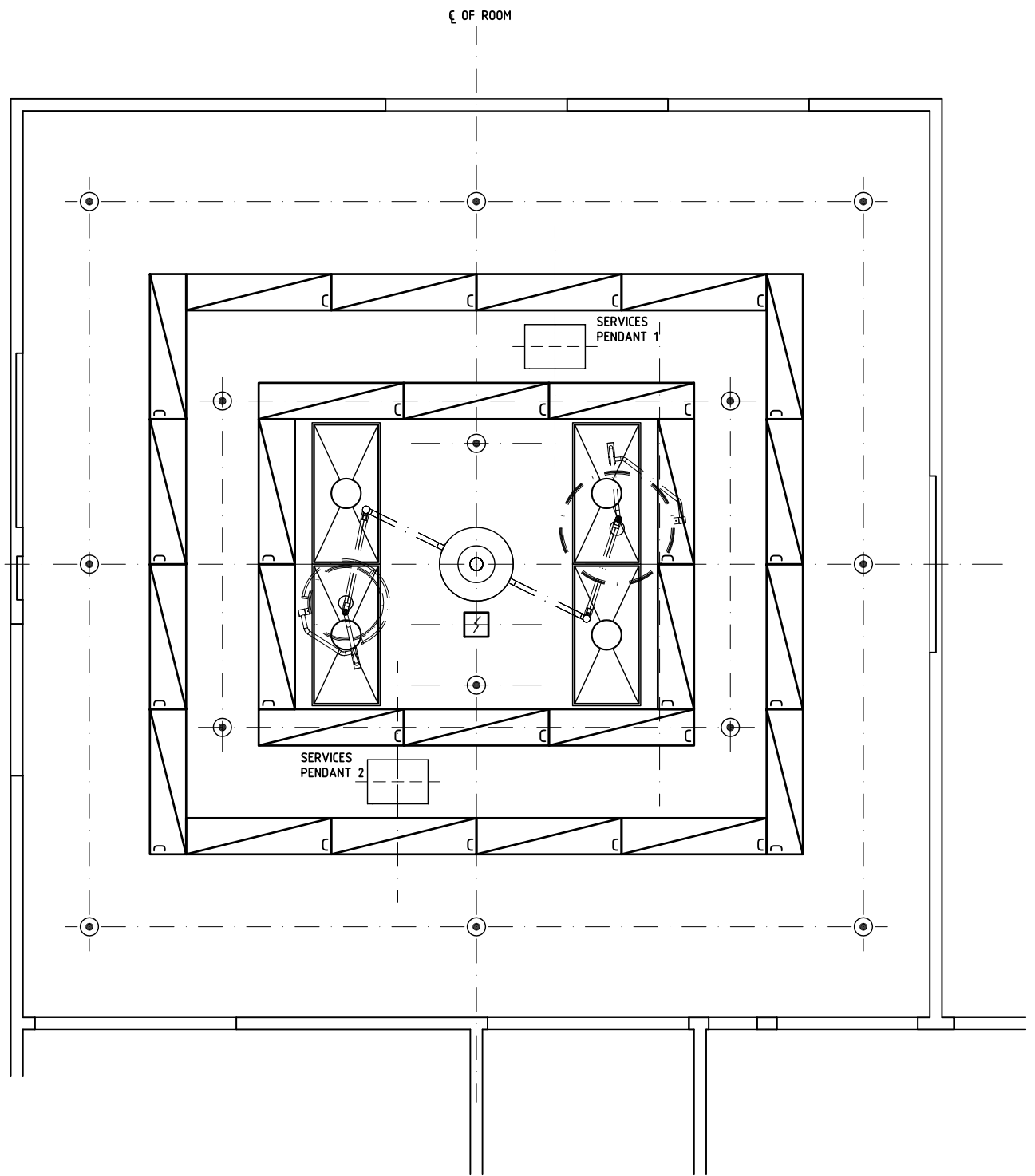
- FLUORESCENT DIFFUSED - RECESSED
COLOUR CORRECTED - CYANOSIS

MECHANICAL LEGEND:

- FILTERED SUPPLY AIR

FIRE SERVICES LEGEND:

- SMOKE DETECTOR
- SPRINKLER



REFLECTED CEILING PLAN

| REV | DESCRIPTION | DATE | BY | REV | DESCRIPTION | DATE | BY | REV | DESCRIPTION | DATE | BY |
|-----|------------------|----------|----|-----|-------------|---------|----|-----|-------------|------|----|
| 2 | GENERAL REVISION | 30.08.11 | SD | 3 | RCP REVISED | 3.11.15 | PJ | | | | |
| 3 | GENERAL REVISION | 31.10.12 | CT | | | | | | | | |

| DESIGNED | APPROVED | DATE | SCALE(S) | SHEET |
|---------------|----------|------------------|------------|--------|
| CC | DB | 24.10.10 | 1:50 in A3 | 3 of 3 |
| CAD FILE NAME | | PAPER DRAWING ID | | ISSUE |
| ORLA-I | | ORLA-Ic | | 3 |



The International Health Facility Guidelines recommends the use of HFBS “Health Facility Briefing System” to edit all room data sheet information for your project.

HFBS provides edit access to all iHFG standard rooms, and departments, and more than 100 custom report templates.

HFBS Health Facility Briefing System



Briefing Module

The Health Facility Briefing System (HFBS) has numerous modules available via annual subscription. It suits healthcare Architects, Medical Planners, Equipment Planners Project Managers and Health Authorities.

Use the HFBS Briefing Module to quickly drag in health facility departments or pre-configured room templates from the iHFG standard, edit the room features such as finishes, furniture, fittings, fixtures, medical equipment, engineering services. The system can print or download as PDF more than 100 custom reports including room data sheets, schedules, and more...

To learn more about the HFBS web-based Healthcare Briefing and Design Software and to obtain editable versions of the “Standard Components” including Room Data Sheets (RDS) and Room Layout Sheets (RLS) offered on the iHFG website, signup for HFBS using the link below.

Get Started Now:
hfbs.healthdesign.com.au

- ✓ iHFG Room Data Sheets and Departments are instantly editable in the HFBS software available online.
- ✓ You can access hundreds of report templates to print your iHFG room data in HFBS.
- ✓ HFBS has a onetime free 3 day trial available to all new users.

Get Started Now:
hfbs.healthdesign.com.au



HFBS

Health Facility Briefing System

hfbsinfo.com | techsupport@healthdesign.com.au