

# iHFG Standard Components

## Room Layout Sheet

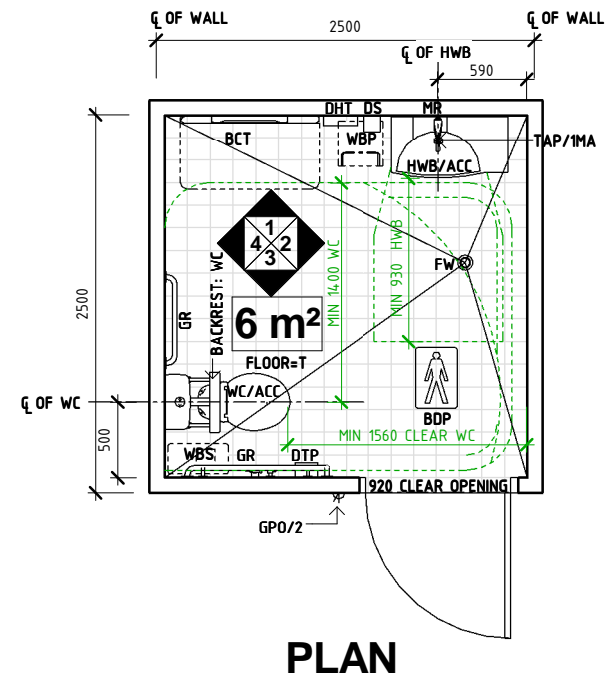
Room Name **Toilet- Accessible, 6m<sup>2</sup>**

RLS Room Code **WCAC-I**

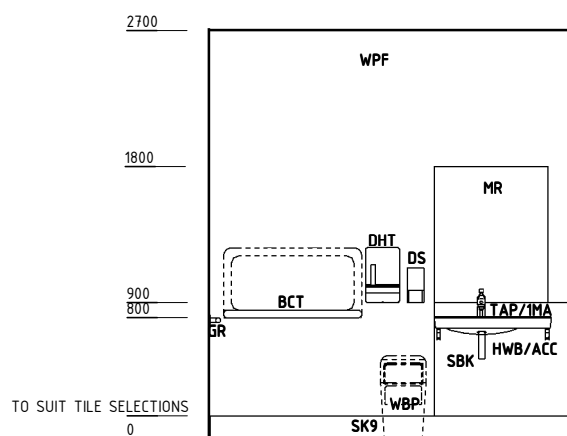
RDS Room Code **WCAC-I**

### Abbreviations

|         |   |
|---------|---|
| BCT     | BABY CHANGE TABLE                       |
| BDP     | BODY PROTECTED                          |
| BHS     | BIDET HANDSET                           |
| COH     | COAT HOOK                               |
| DHT     | DISPENSER - HAND TOWEL                  |
| DP      | DOOR AND DOOR FRAME PROTECTION          |
| DS      | DISPENSER: SOAP                         |
| DTP     | DISPENSER: TOILET PAPER                 |
| EC      | EMERGENCY CALL                          |
| FW      | FLOOR WASTE                             |
| GPO/2   | GENERAL POWER OUTLET - DOUBLE           |
| GR      | GRAB RAIL                               |
| HWB/ACC | HAND WASH BASIN -ACCESSIBLE             |
| LS/R    | LIGHT SWITCH - ROOM                     |
| MR      | MIRROR                                  |
| PS      | PATIENT TO STAFF CALL                   |
| SA      | STAFF ASSIST CALL                       |
| SBK     | SPLASHBACK                              |
| TAP/IMA | TAPWARE- SINGLE MIXER LEVER, ACCESSIBLE |
| VE      | VENTILATION                             |
| WBP     | WASTE BIN: PAPER                        |
| WBS     | WASTE BIN SANITARY                      |
| WC/ACC  | WATER CLOSET: ACCESSIBLE                |
| SK9     | TILE COVERED SKIRTING                   |
| WPF     | WALL PAINT FINISH                       |
| T       | TILE                                    |

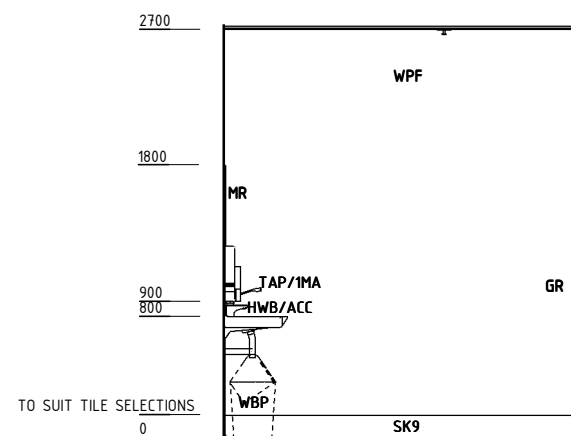


**PLAN**

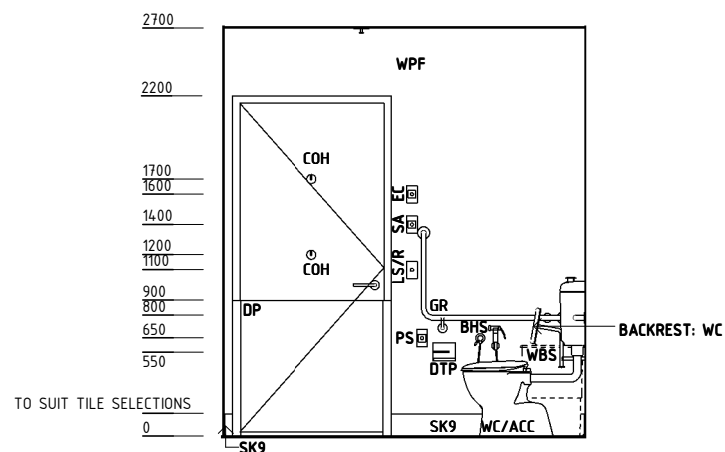


**ELEVATION 1**

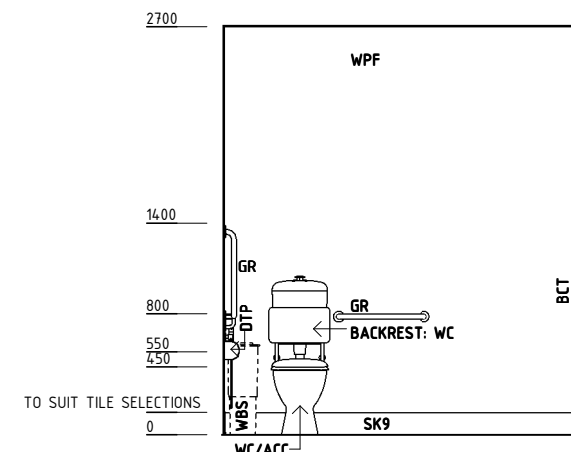
NOTE:  
 1. HEIGHT FOR HWB/ACC MAY RANGE FROM 680MM TO 830MM.  
 2. HEIGHT FOR WC/ACC MAY RANGE FROM 450MM TO 480MM



**ELEVATION 2**



**ELEVATION 3**



**ELEVATION 4**

| REV | DESCRIPTION   | DATE       | BY | REV | DESCRIPTION | DATE | BY | REV | DESCRIPTION | DATE | BY |
|-----|---------------|------------|----|-----|-------------|------|----|-----|-------------|------|----|
| 1   | FIRST ISSUE # | 26.06.2015 | NB |     |             |      |    |     |             |      |    |

# iHFG Standard Components

## Room Layout Sheet

Room Name Toilet- Accessible, 6m<sup>2</sup>

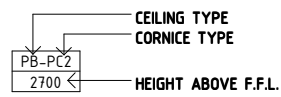
RLS Room Code WCAC-I  
RDS Room Code WCAC-I

### GENERAL NOTES:

THIS DRAWING TO BE READ IN CONJUNCTION WITH R.D.S. (ROOM DATA SHEETS) WHICH TAKES PRECEDENCE.

ALL SERVICES INDICATED ARE INDICATIVE AND SUBJECTED TO DETAILED PROJECT SPECIFIC ENGINEERING DESIGN.

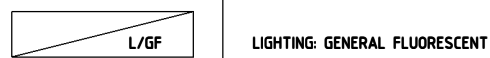
### CEILING LEGEND:



HEIGHT ABOVE F.F.L.  
WPT-PC4 WATER RESISTANT, DROP IN TILES WITH POWDERCOAT ALUMINIUM CORNICE, SHADOW LINE

TILE CEILING GRID (1200 x 600)

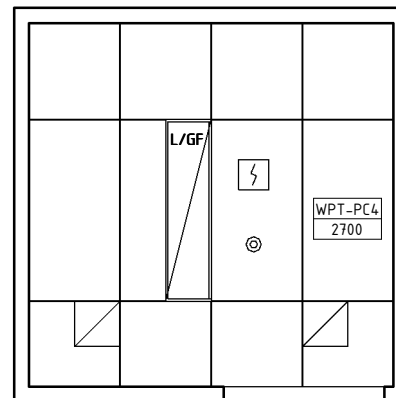
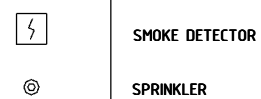
### ELECTRICAL LEGEND:



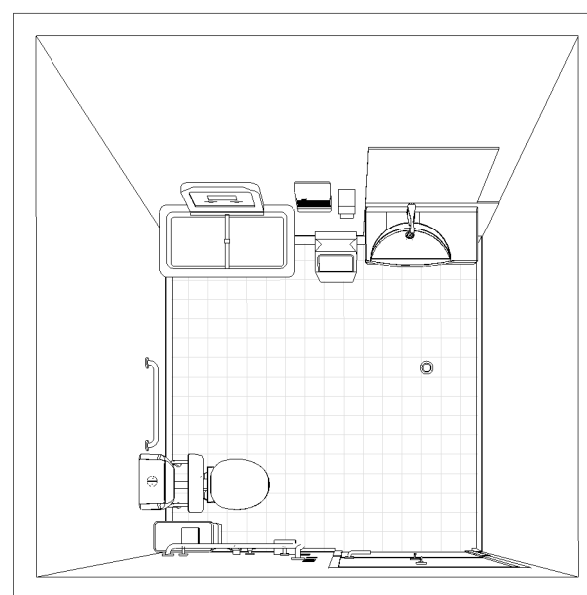
### MECHANICAL LEGEND:



### FIRE SERVICES LEGEND:



REFLECTED CEILING PLAN



PERSPECTIVE - PLAN VIEW

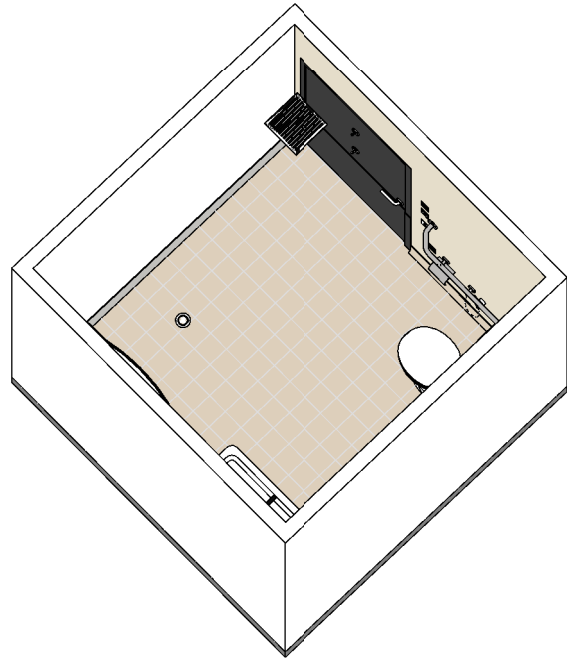
| REV | DESCRIPTION   | DATE       | BY | REV | DESCRIPTION | DATE | BY | REV | DESCRIPTION | DATE | BY |
|-----|---------------|------------|----|-----|-------------|------|----|-----|-------------|------|----|
| 1   | FIRST ISSUE # | 26.06.2015 | NB |     |             |      |    |     |             |      |    |

# iHFG Standard Components

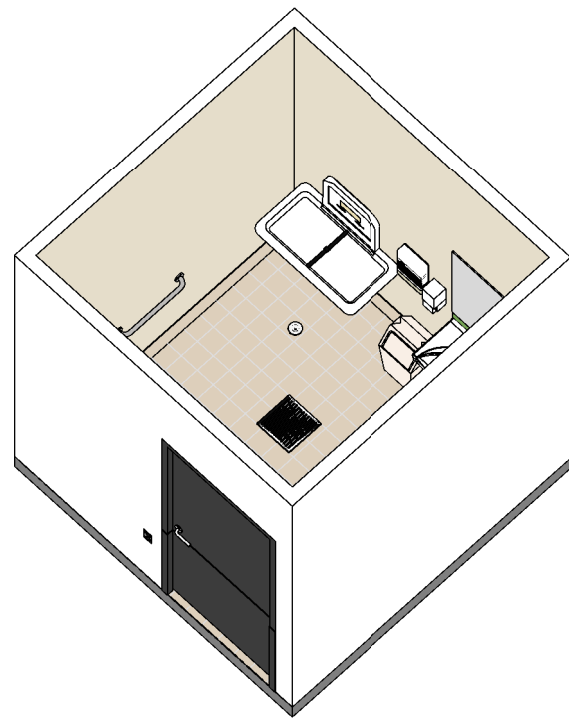
Room Layout Sheet

Room Name | Toilet- Accessible, 6m<sup>2</sup>

RLS Room Code WCAC--I  
RDS Room Code WCAC-I



ISOMETRIC VIEW 01



ISOMETRIC VIEW 02



PERSPECTIVE 01

| REV | DESCRIPTION   | DATE       | BY | REV | DESCRIPTION | DATE | BY | REV | DESCRIPTION | DATE | BY |
|-----|---------------|------------|----|-----|-------------|------|----|-----|-------------|------|----|
| 1   | FIRST ISSUE # | 26.06.2015 | NB |     |             |      |    |     |             |      |    |



The International Health Facility Guidelines recommends the use of HFBS “Health Facility Briefing System” to edit all room data sheet information for your project.

HFBS provides edit access to all iHFG standard rooms, and departments, and more than 100 custom report templates.

## HFBS Health Facility Briefing System



### Briefing Module

The Health Facility Briefing System (HFBS) has numerous modules available via annual subscription. It suits healthcare Architects, Medical Planners, Equipment Planners Project Managers and Health Authorities.

Use the HFBS Briefing Module to quickly drag in health facility departments or pre-configured room templates from the iHFG standard, edit the room features such as finishes, furniture, fittings, fixtures, medical equipment, engineering services. The system can print or download as PDF more than 100 custom reports including room data sheets, schedules, and more...

To learn more about the HFBS web-based Healthcare Briefing and Design Software and to obtain editable versions of the “Standard Components” including Room Data Sheets (RDS) and Room Layout Sheets (RLS) offered on the iHFG website, signup for HFBS using the link below.

**Get Started Now:**  
[hfbs.healthdesign.com.au](http://hfbs.healthdesign.com.au)

- ✓ iHFG Room Data Sheets and Departments are instantly editable in the HFBS software available online.
- ✓ You can access hundreds of report templates to print your iHFG room data in HFBS.
- ✓ HFBS has a onetime free 3 day trial available to all new users.

**Get Started Now:**  
[hfbs.healthdesign.com.au](http://hfbs.healthdesign.com.au)



## HFBS

Health Facility Briefing System

[hfbsinfo.com](http://hfbsinfo.com) | [techsupport@healthdesign.com.au](mailto:techsupport@healthdesign.com.au)