

iHFG Standard Components

Room Layout Sheet

Room Name | **Dirty Utility - Sub**

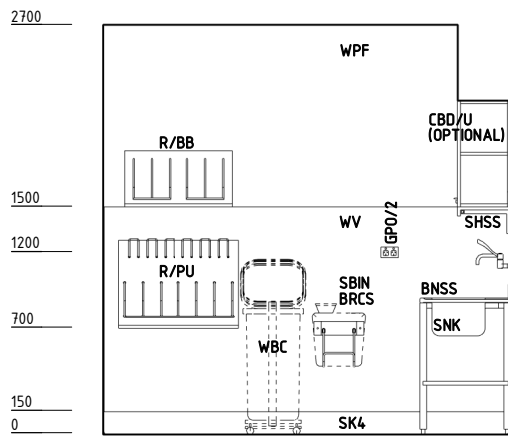
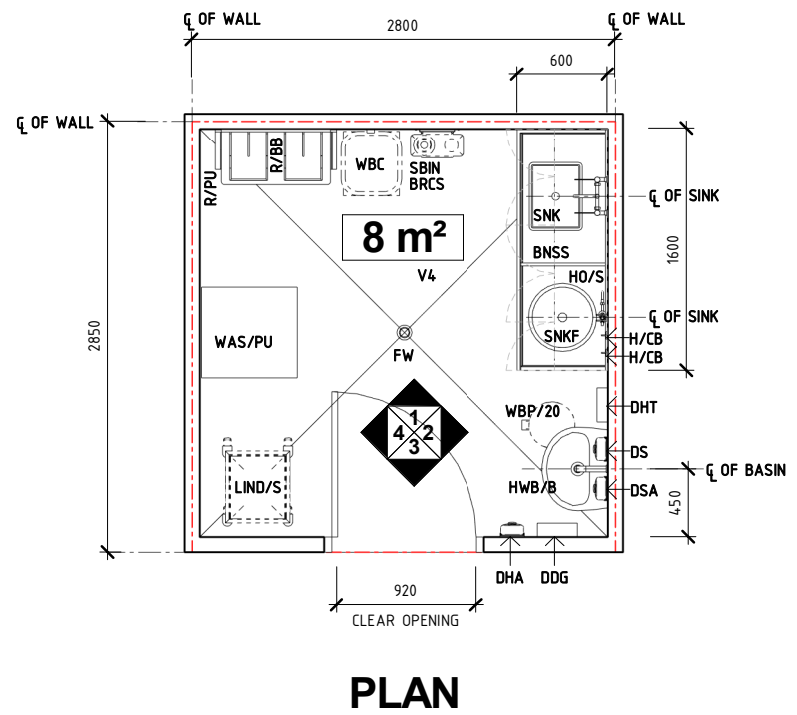
RLS Room Code

dtur-s-i

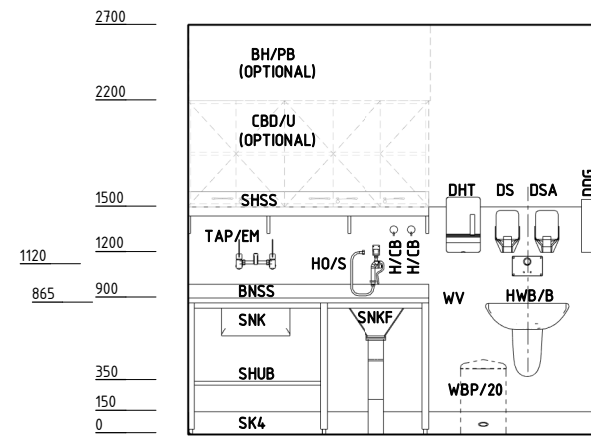
RDS Room Code

dtur-s-i

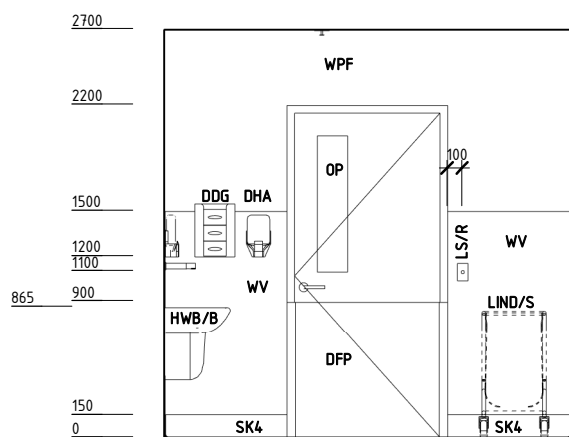
- ACT ACOUSTIC CEILING TILES
- BH/PB BULKHEAD - PLASTERBOARD, PAINT FINISH
- BNSS BENCH - STAINLESS STEEL
- BRCs BRACKET - SHARPS
- CBD/U CUPBOARD - URINALYSIS
- CW COLD WATER OUTLET
- DDG DISPENSER - DISPOSABLE GLOVES
- DFP DOOR AND DOOR FRAME PROTECTION
- DHA DISPENSER - HAND GEL, ANTIBACTERIAL
- DHT DISPENSER - PAPER - HAND TOWEL
- DS DISPENSER - SOAP
- DSA DISPENSER - SOAP, ANTISEPTIC
- FW FLOOR WASTE
- GPO/1S GENERAL POWER OUTLET - SPECIAL
- GPO/2 GENERAL POWER OUTLET - DOUBLE
- H/CB HOOK - FOR CATHETER BAG
- HO/S HOSE - SPRAY
- HW HOT WATER OUTLET
- HWB/B HAND WASH BASIN - TYPE 'B'
- L/GF LIGHT - GENERAL FLUORESCENT
- LIND/S LINEN CARRIER - DIRTY, SINGLE
- LS/R LIGHT SWITCH - ROOM
- OP OBSERVATION PANEL
- R/BB RACK - BOWL / BASIN
- R/PU RACK - PAN & URINALS
- SBIN SHARPS BIN
- SHSS SHELF - STAINLESS STEEL
- SHUB SHELF - UNDER BENCH
- SK4 FLOOR VINYL COVERED SKIRTING
- SNK SINK, STAINLESS STEEL
- SNKF SINK - FLUSHING RIM
- TAP/EM TAPWARE - ELBOW MIXER
- V4 VINYL FLOORING, NON SLIP - SAFETY
- WAS/PU WASHER SANITISER - PAN & UTENSIL COMBINED
- WBC WASTE BIN - CLINICAL
- WBP/20 WASTE BIN - PAPER, 20 LITRE
- WPF WALL PAINT FINISH
- WV WALL VINYL



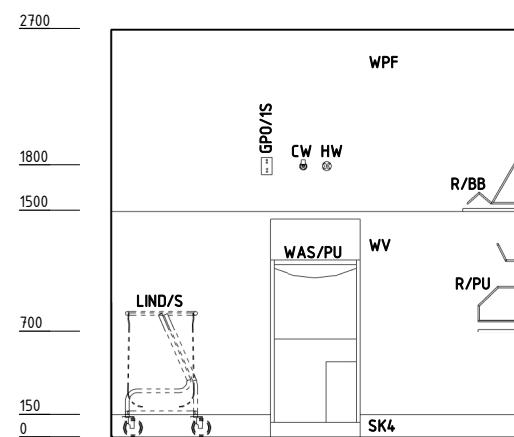
ELEVATION 1



ELEVATION 2



ELEVATION 3



ELEVATION 4

REV	DESCRIPTION	DATE	BY	REV	DESCRIPTION	DATE	BY	COMPATIBILITY
1	FIRST ISSUE	05.03.2017	RC					iHFG AHFG FGI HBN HTM HAAD
								DESIGNED: RC
								APPROVED: DB
								DATE: 05.03.2017
								SCALE(S): 1 : 50
								SHEET: 1 OF 2
								REVIT FILE NAME: dtur-s-i
								PAPER DRAWING ID: dtur-s-i-1
								ISSUE: 1

iHFG Standard Components

Room Layout Sheet

Room Name **Dirty Utility - Sub**

RLS Room Code

dtur-s-i

RDS Room Code

dtur-s-i

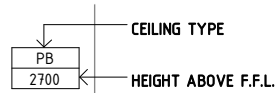
ACT ACOUSTIC CEILING TILES
 BH/PB BULKHEAD - PLASTERBOARD, PAINT FINISH
 L/GF LIGHT - GENERAL FLUORESCENT

GENERAL NOTES:

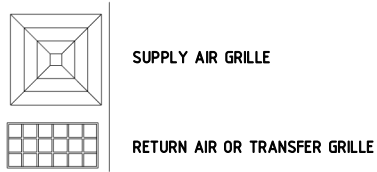
THIS DRAWING TO BE READ IN CONJUNCTION WITH R.D.S. (ROOM DATA SHEETS) WHICH TAKES PRECEDENCE.

ALL SERVICES INDICATED ARE INDICATIVE AND SUBJECT TO DETAILED PROJECT SPECIFIC ENGINEERING DESIGN.

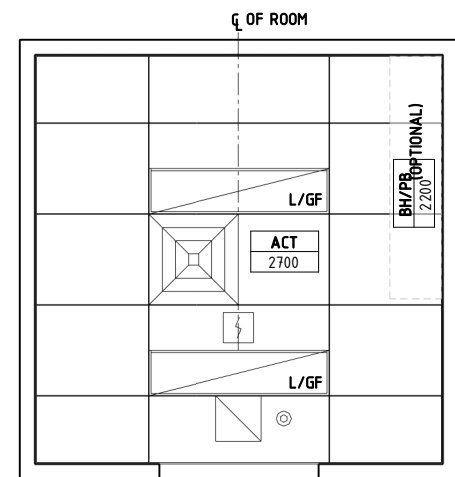
CEILING LEGEND:



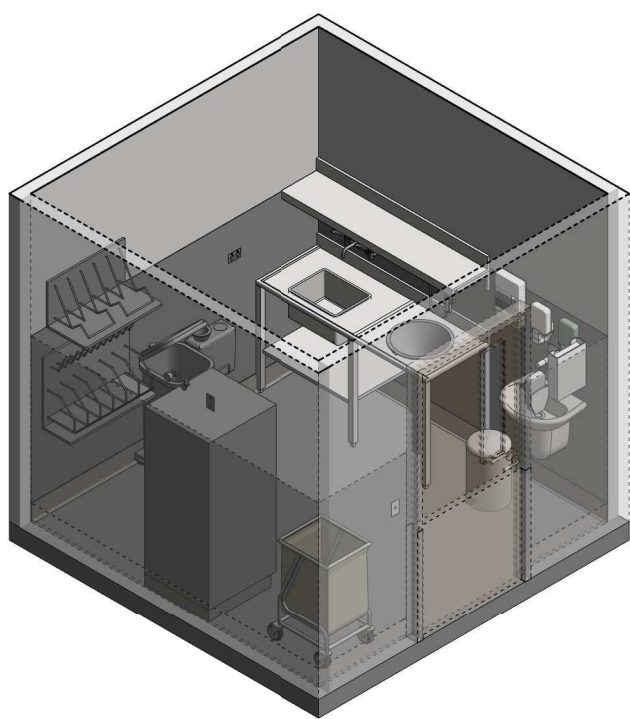
MECHANICAL LEGEND:



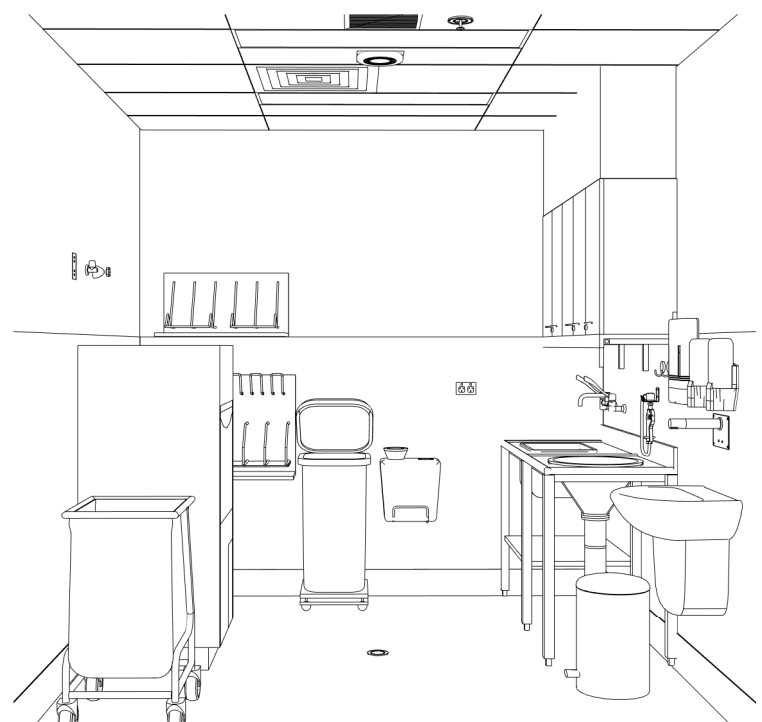
FIRE SERVICES LEGEND:



REFLECTED CEILING PLAN



ISOMETRIC VIEW



PERSPECTIVE VIEW

REV	DESCRIPTION	DATE	BY	REV	DESCRIPTION	DATE	BY	COMPATIBILITY																				
1	FIRST ISSUE	05.03.2017	RC					iHFG AHFG FGI HBN HTM HAAD																				
								<table border="1"> <tr> <th>DESIGNED</th> <th>APPROVED</th> <th>DATE</th> <th>SCALE(S)</th> <th>SHEET</th> </tr> <tr> <td>RC</td> <td>DB</td> <td>05.03.2017</td> <td>1 : 50</td> <td>2 OF 2</td> </tr> <tr> <th colspan="2">REVIT FILE NAME</th> <th colspan="2">PAPER DRAWING ID</th> <th>ISSUE</th> </tr> <tr> <td colspan="2">dtur-s-i</td> <td colspan="2">dtur-s-i-2</td> <td>1</td> </tr> </table>	DESIGNED	APPROVED	DATE	SCALE(S)	SHEET	RC	DB	05.03.2017	1 : 50	2 OF 2	REVIT FILE NAME		PAPER DRAWING ID		ISSUE	dtur-s-i		dtur-s-i-2		1
DESIGNED	APPROVED	DATE	SCALE(S)	SHEET																								
RC	DB	05.03.2017	1 : 50	2 OF 2																								
REVIT FILE NAME		PAPER DRAWING ID		ISSUE																								
dtur-s-i		dtur-s-i-2		1																								



International Health Facility Guidelines at:
www.healthdesign.com.au/iHFG
 Editable version of Standard Components on
 Health Facility Briefing System (HFBS) at:
www.healthdesign.com.au ©TAHPI





The International Health Facility Guidelines recommends the use of HFBS “Health Facility Briefing System” to edit all room data sheet information for your project.

HFBS provides edit access to all iHFG standard rooms, and departments, and more than 100 custom report templates.

HFBS Health Facility Briefing System



Briefing Module

The Health Facility Briefing System (HFBS) has numerous modules available via annual subscription. It suits healthcare Architects, Medical Planners, Equipment Planners Project Managers and Health Authorities.

Use the HFBS Briefing Module to quickly drag in health facility departments or pre-configured room templates from the iHFG standard, edit the room features such as finishes, furniture, fittings, fixtures, medical equipment, engineering services. The system can print or download as PDF more than 100 custom reports including room data sheets, schedules, and more...

To learn more about the HFBS web-based Healthcare Briefing and Design Software and to obtain editable versions of the “Standard Components” including Room Data Sheets (RDS) and Room Layout Sheets (RLS) offered on the iHFG website, signup for HFBS using the link below.

Get Started Now:
hfbs.healthdesign.com.au

- ✓ iHFG Room Data Sheets and Departments are instantly editable in the HFBS software available online.
- ✓ You can access hundreds of report templates to print your iHFG room data in HFBS.
- ✓ HFBS has a onetime free 3 day trial available to all new users.

Get Started Now:
hfbs.healthdesign.com.au



HFBS

Health Facility Briefing System

hfbsinfo.com | techsupport@healthdesign.com.au