

iHFG Standard Components

Room Layout Sheet

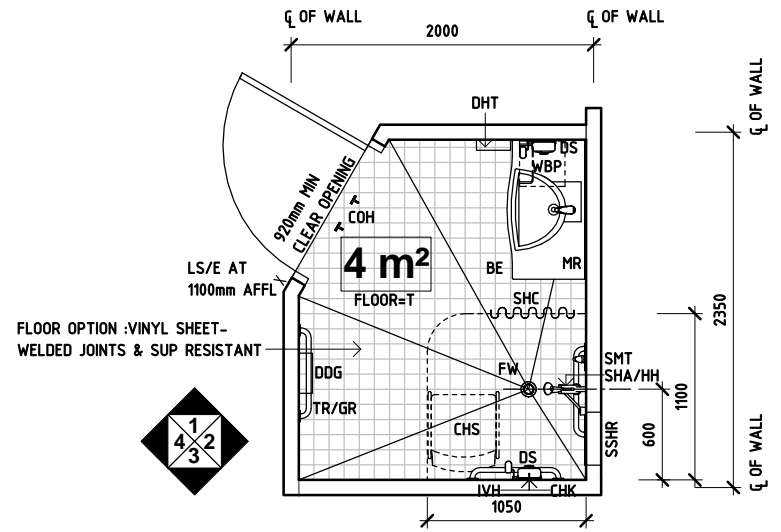
Room Name | Shower - Patient

RLS Room Code SHPT-I
RDS Room Code SHPT-I

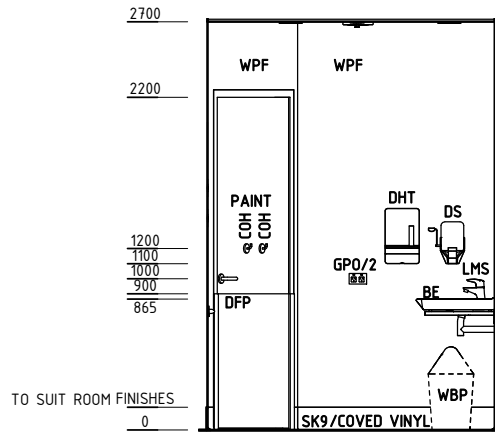
Abbreviations

BE	BASIN: ENSUITE
CHK	CATHETER HOOK
CHS	CHAIR: SHOWER
COH	COAT HOOK
CTS	CURTAIN TRACK: SHOWER
DDG	DISPENSER - DISPOSABLE GLOVES
DFP	DOOR AND DOOR FRAME PROTECTION
DHT	DISPENSER - HAND TOWEL
DS	DISPENSER - SOAP
EC	EMERGENCY CALL
FW	FLOOR WASTE
GPO/2	GENERAL POWER OUTLET - DOUBLE
GRS	GRAB RAIL: SHOWER
IVH	IV HOOK
LMS	LEVER MIXER SINGLE
LS/E	LIGHT SWITCH - ENSUITE
MR	MIRROR
PS	PATIENT TO STAFF CALL
SA	STAFF ASSIST CALL
SHA/HH	SHOWER HEAD ADJUSTABLE, HAND HELD
SHC	SHOWER CURTAIN
SMT	SHOWER MIXER TAP
SSHR	SOAP, SHAMPOO HOLDER - RECESSED
TR/GR	TOWEL RAIL, GRAB RAIL
WBP	WASTE BIN, PAPER
SK9	TILE COVERED SKIRTING
WPF	WALL PAINT FINISH
WT	WALL TILE
T	TILE

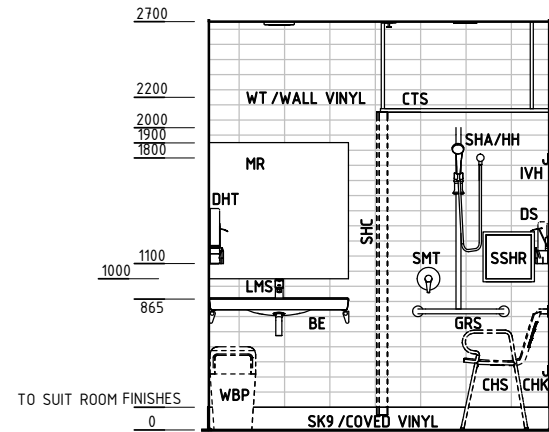
NOTE:
1. FALLS IN FLOOR IN SHOWER TO BE 1:60,
OUTSIDE SHOWER TO BE 1:80 TO 1:100



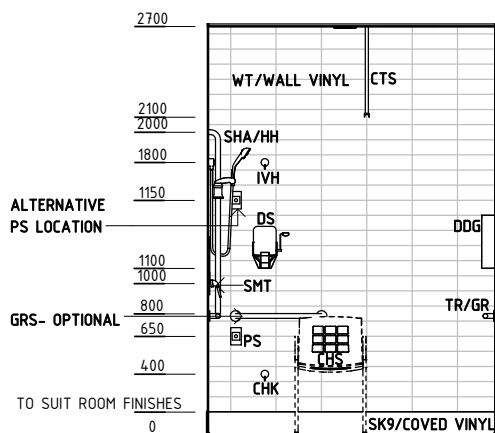
PLAN



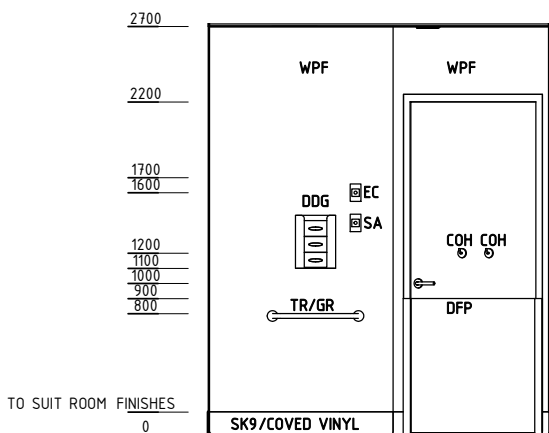
ELEVATION 1



ELEVATION 2



ELEVATION 3



ELEVATION 4

REV	DESCRIPTION	DATE	BY	REV	DESCRIPTION	DATE	BY	REV	DESCRIPTION	DATE	BY
1	FIRST ISSUE #	27.10.2014	NB								
2	GENERAL REVISION	14.04.2014	NB								

iHFG Standard Components

Room Layout Sheet

Room Name | Shower - Patient

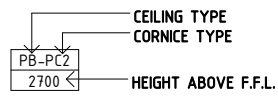
RLS Room Code SHPT-I
RDS Room Code SHPT-I

GENERAL NOTES:

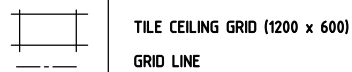
THIS DRAWING TO BE READ IN CONJUNCTION WITH R.D.S. (ROOM DATA SHEETS) WHICH TAKES PRECEDENCE.

ALL SERVICES INDICATED ARE INDICATIVE AND SUBJECTED TO DETAILED PROJECT SPECIFIC ENGINEERING DESIGN.

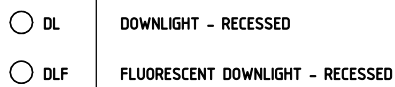
CEILING LEGEND:



WPT-PC4 WATER RESISTANT, DROP IN TILES WITH POWDERCOAT ALUMINIUM CORNICE, SHADOW LINE



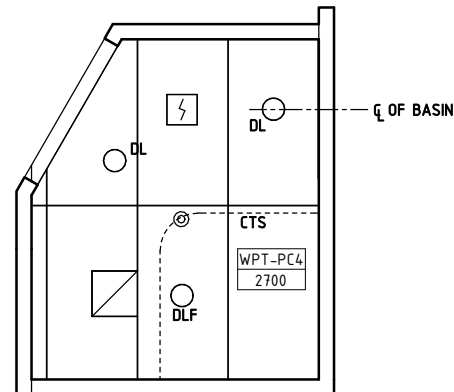
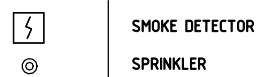
ELECTRICAL LEGEND:



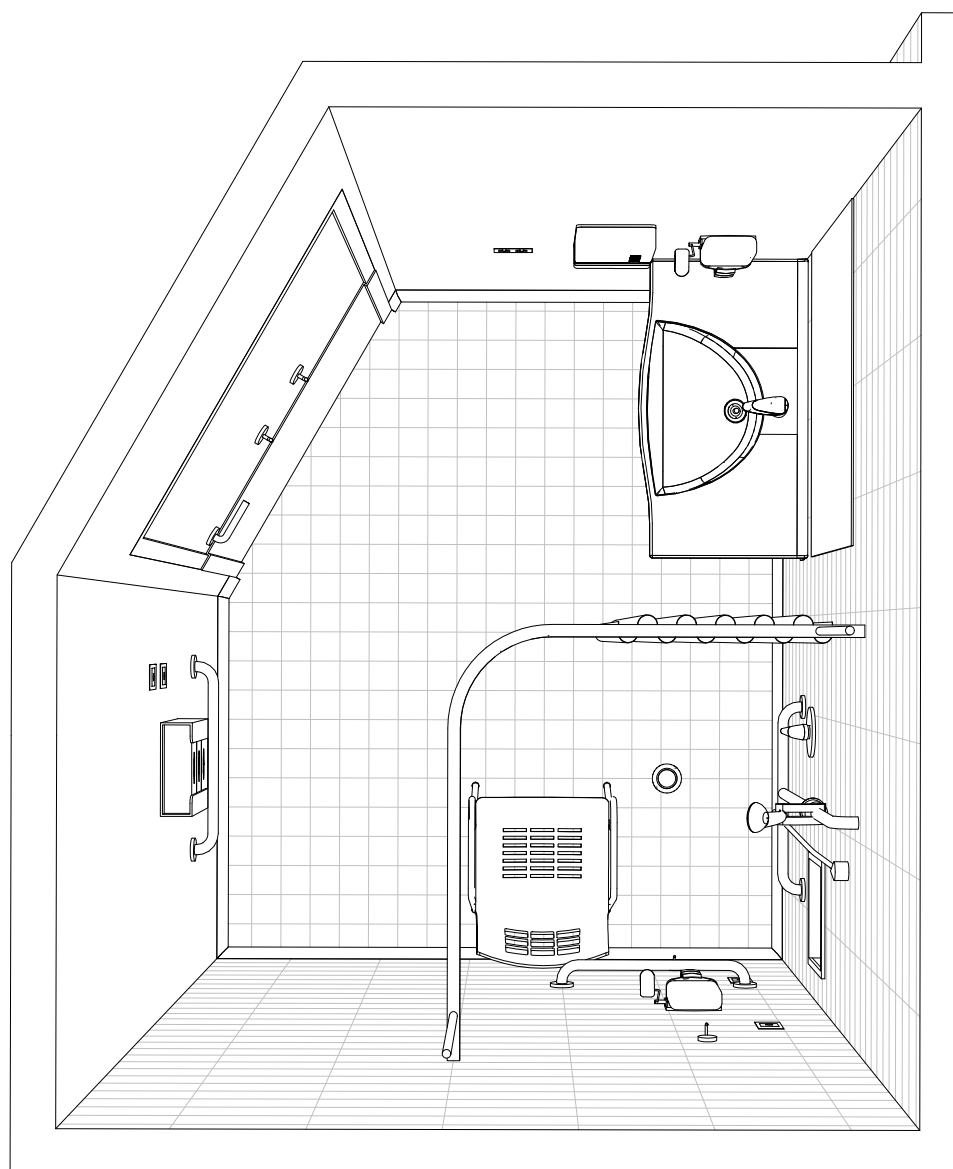
MECHANICAL LEGEND:



FIRE SERVICES LEGEND:



REFLECTED CEILING PLAN



PERSPECTIVE - PLAN VIEW

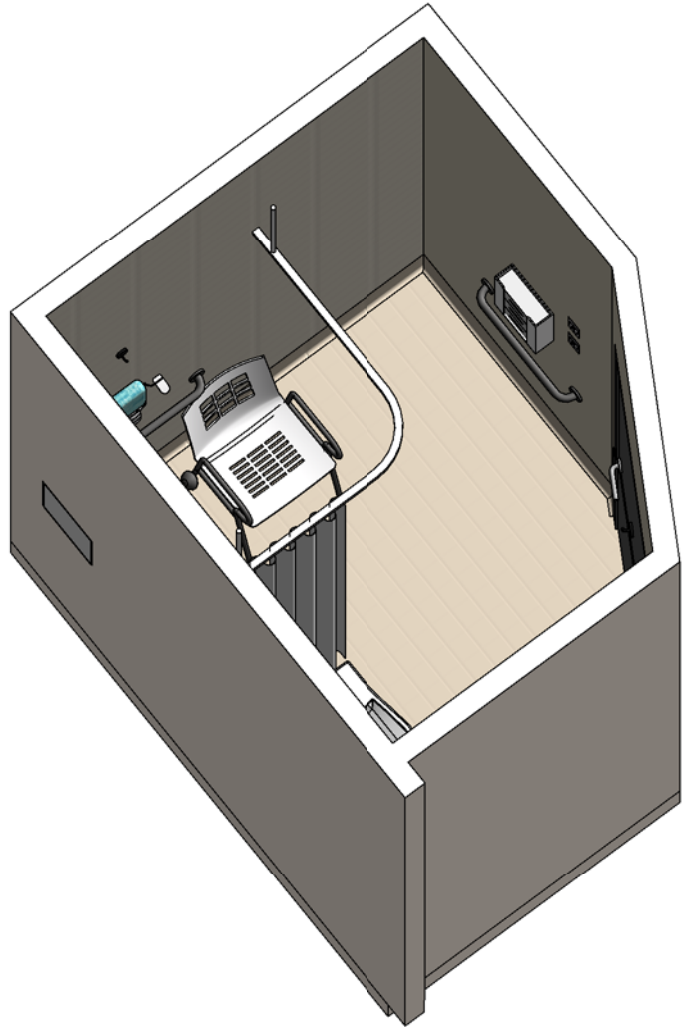
REV	DESCRIPTION	DATE	BY	REV	DESCRIPTION	DATE	BY	REV	DESCRIPTION	DATE	BY
1	FIRST ISSUE #	27.10.2014	NB								
2	GENERAL REVISION	14.04.2014	NB								

iHFG Standard Components

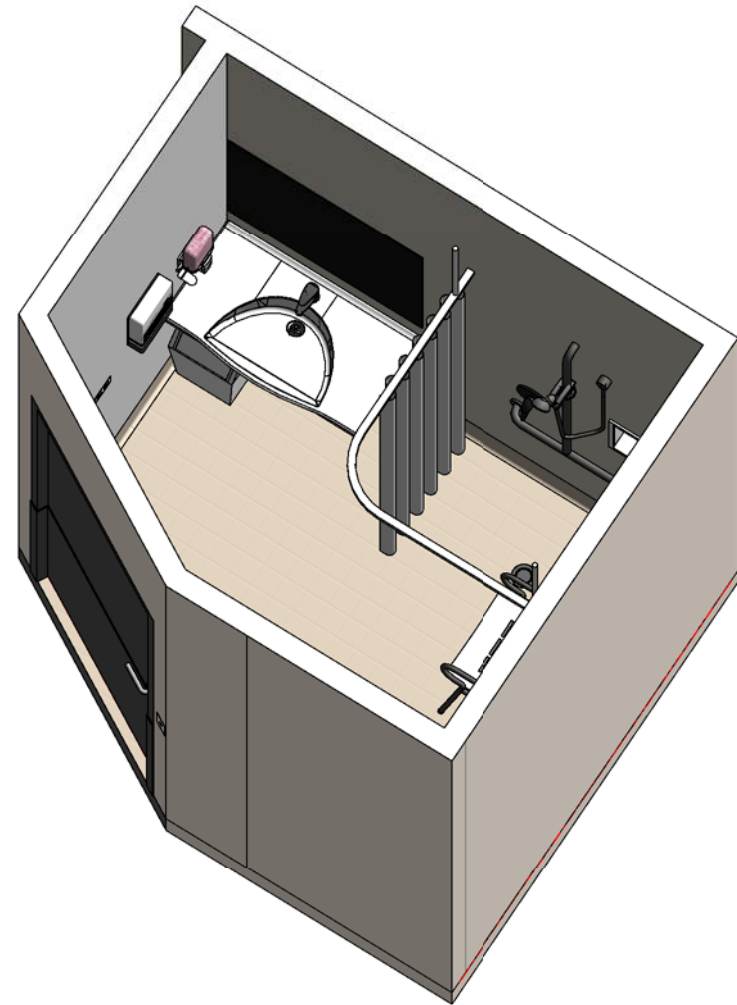
Room Layout Sheet

Room Name | Shower - Patient

RLS Room Code SHPT-I
RDS Room Code SHPT-I



ISOMETRIC VIEW 01



ISOMETRIC VIEW 02



PERSPECTIVE 01

REV	DESCRIPTION	DATE	BY	REV	DESCRIPTION	DATE	BY	REV	DESCRIPTION	DATE	BY
1	FIRST ISSUE #	27.10.2014	NB								
2	GENERAL REVISION	14.04.2014	NB								



The International Health Facility Guidelines recommends the use of HFBS “Health Facility Briefing System” to edit all room data sheet information for your project.

HFBS provides edit access to all iHFG standard rooms, and departments, and more than 100 custom report templates.

HFBS Health Facility Briefing System



Briefing Module

The Health Facility Briefing System (HFBS) has numerous modules available via annual subscription. It suits healthcare Architects, Medical Planners, Equipment Planners Project Managers and Health Authorities.

Use the HFBS Briefing Module to quickly drag in health facility departments or pre-configured room templates from the iHFG standard, edit the room features such as finishes, furniture, fittings, fixtures, medical equipment, engineering services. The system can print or download as PDF more than 100 custom reports including room data sheets, schedules, and more...

To learn more about the HFBS web-based Healthcare Briefing and Design Software and to obtain editable versions of the “Standard Components” including Room Data Sheets (RDS) and Room Layout Sheets (RLS) offered on the iHFG website, signup for HFBS using the link below.

Get Started Now:
hfbs.healthdesign.com.au

- ✓ iHFG Room Data Sheets and Departments are instantly editable in the HFBS software available online.
- ✓ You can access hundreds of report templates to print your iHFG room data in HFBS.
- ✓ HFBS has a onetime free 3 day trial available to all new users.

Get Started Now:
hfbs.healthdesign.com.au



HFBS

Health Facility Briefing System

hfbsinfo.com | techsupport@healthdesign.com.au